

# COMPSTALL

## CONSERVATION AREA CHARACTER APPRAISAL

March 2006 (Updated March 2012)



## **Special Character of the Compstall Conservation Area**

The special character of the Compstall Conservation Area derives from the following elements:

- Relationship between the River Etherow, its steep-sided valley and the buildings of the mill village
- Contrast between the close urban grain of the mill village and its open wooded and lakeside setting
- The way in which the mill group, terraces of former workers' housing, hydraulic engineering features and evidence of mining and transport systems illustrate the development of this important early industrial site
- Panoramic views over the surrounding Pennine landscape contrast with restricted progressive views along the streets of the village
- Use of local stone as the predominant building material, in association with Welsh slate roofs; predominant use of brick at Compstall Mills
- Compstall is a popular village, with an active community, which attracts large numbers of visitors to the Country Park and local nature reserve based on the former mill reservoirs, leat, and Ernocroft Wood.

A definition of the special interest of the conservation area is set out at the conclusion of the character appraisal.

## Contents

<b>1.</b>	<b>Background</b>	<b>1</b>
<b>2</b>	<b>Review and Updating</b>	<b>2</b>
2.1	Boundary Review	2
<b>3.</b>	<b>Character Appraisal</b>	<b>4</b>
3.1	Location and Context	4
3.2	Origins and Development	4
3.3	Archaeology	7
3.4	Character and Appearance	10
3.5	Landscape Setting, Views and Vistas	13
3.6	Key Historic Buildings	15
3.6.1	Listed Buildings	15
3.6.2	Locally Listed Buildings	17
3.6.3	Key Unlisted Buildings	17
3.7	Architecture and Building Materials	26
3.8	Contribution of Trees, Hedges and Green Spaces	28
3.9	Floorscape and Street Furniture	29
3.10	Definition of the Special Interest of the Conservation Area	29
<b>4.</b>	<b>Preservation and Enhancement Issues</b>	<b>30</b>
4.1	Condition of the Building Fabric	30
4.2	Extent of Loss and Intrusion	31
4.3	Development Issues	31
4.4	Preservation and Enhancement	31
<b>5.</b>	<b>Community Involvement</b>	<b>32</b>
5.1	Public Consultation	32
5.2	Response to Stakeholder Comments	32
<b>6.</b>	<b>References and Further Reading</b>	<b>34</b>
<b>7.</b>	<b>Contacts</b>	<b>36</b>
<b>Appendix 1</b>	<b>Public Consultation Questionnaire Response</b>	<b>38</b>
<b>Appendix 2</b>	<b>Townscape Appraisal Map</b>	<b>40</b>
<b>Appendix 3</b>	<b>Listed &amp; Locally Listed Buildings Map</b>	<b>41</b>
<b>Appendix 4</b>	<b>Historic Environment Record Entries</b>	<b>42</b>
<b>Appendix 5</b>	<b>Historic Environment Record Map</b>	<b>65</b>

## 1. Background

A conservation area is an “area of special architectural or historic interest the character or appearance of which it is desirable to preserve or enhance” (according to Section 69 of the Town and Country Planning (Listed Buildings and Conservation Areas) Act 1990). It is the duty of Local Authorities to designate such areas and to use their legal powers to safeguard and enhance the special qualities of these areas within a framework of controlled and positive management of change. Designation automatically entails control over the demolition of unlisted buildings, strengthens controls over minor development and gives special protection to trees within an area. Further controls over minor developments may also be put in place under Article 4(1) or 4(2) of the Act.

Section 69(2) of the Act imposes a duty on Local Authorities to review their conservation areas from time to time, while Section 71 requires them to formulate and publish proposals for the preservation or enhancement of conservation areas. The Council's Conservation & Heritage Strategy (approved in 2008) identifies the following key tasks as short to medium term objectives:

Ensure all Conservation Areas are adequately protected and have up to date character appraisals and management plans in place:

- Examine potential for further conservation areas.
- 100% of conservation areas have recent appraisals (5 years old or less)
- 100% of conservation areas have management plans
- Implement actions of management plans
- Article 4 directions, where appropriate, in place and monitored

The National Planning Policy Framework (NPPF) sets out the Government's planning policies for England and how these are expected to be applied. It sets out the Government's requirements for the planning system and provides a framework for the production of distinctive local and neighbourhood development plans, which reflect the needs and priorities of their communities. Planning law requires that applications for planning permission must be determined in accordance with the development plan, unless material considerations indicate otherwise. The NPPF must be taken into account in the preparation of these local and neighbourhood plans, and is a material consideration in development management decisions. Planning policies and decisions must reflect relevant EU obligations and statutory requirements.

The policies and principles set out in the NPPF apply to the consideration of the conservation and enhancement of the historic environment in relation to the heritage-related consent regimes for which planning authorities are responsible under the Planning (Listed Buildings and Conservation Areas) Act 1990. Those parts of the historic environment that have significance because of their historic, archaeological, architectural or artistic interest are called heritage assets. Some heritage assets possess a level of interest that justifies designation and particular procedures apply to decisions that involve them. For the purposes of the NPPF, Conservation Areas are designated heritage assets.

Public consultation is at the heart of local authority responsibilities in protecting and enhancing conservation areas. In April 2005 Stockport Borough Council canvassed the views of the public and local amenity bodies as part of a borough-wide review of both existing and possible conservation areas. Stakeholders were invited to put forward suggestions for areas that they considered to be worthy of designation and a report was

taken to Executive on 6th June 2005 outlining areas considered to merit further investigation.

A number of criteria have been taken into account in judging the suitability of areas for designation:

- buildings and spaces should be of special architectural and townscape merit
- areas should possess special qualities which contribute to local distinctiveness and sense of place
- areas should be representative of the historic, social and economic development of the borough
- areas should have largely unspoilt character and appearance

The Compstall Conservation Area was first designated in October 1974. This document is one of a number prepared during 2005-07 and is the outcome of the process of consultation and appraisal. This document has been further reviewed and updated in 2011-12.

The purpose of this document is to:

- set out the conclusions of boundary review
- assess and define the special interest of Compstall Conservation Area
- set out the results of public consultation on the revisions to Conservation Areas
- assess the action needed to protect and enhance the special qualities of Compstall Conservation Area

It is, however, not intended to be comprehensive in its scope and content. Omission of any specific building, space, feature or aspect of its appearance or character should not be taken to imply that they have no significance.

## **2. Review and Updating**

English Heritage advice states that conservation area character appraisals need to be reviewed regularly and that ideally existing appraisals should be reviewed every five years (Guidance on Conservation Area Appraisals 2006 p22). This process of review and updating of appraisals will provide an opportunity to record any changes that have occurred, to confirm (or redefine) the special interest that warrants designation, to set out any new recommendations and to revise the management strategy.

In accordance with English Heritage recommendations, the Compstall Conservation Area Appraisal was reviewed and updated in 2012.

### **2.1 Boundary Review**

English Heritage guidance stresses that a conservation area review should address the desirability of both the extension and reduction of the existing designated area. The removal of conservation area status can be an appropriate course of action where alterations and redevelopments since designation have resulted in the loss of the special architectural or historic character that the original designation was designed to protect and enhance. Conversely, tightly-drawn boundaries may require extending to reflect the need

to protect an area's setting, to take advantage of new planning controls or respond to present development pressures, or to reflect new attitudes to architecture or advances in knowledge of the history of an area.

Compstall Conservation Area was originally designated in 1974 and extended to include the large former mill reservoir and the open countryside to the west of Andrew Street in 1990. Following the consultations set out in this document, a further extension was designated in March 2006. This extension recognised the importance of the river and the extensive interventions in the landscape to supply water and fuel to the mills, as well as protecting the southern gateway to Compstall and the village's landscape setting.

Appendix 3 contains a map of the conservation area boundary. As part of a review in 2012, the boundary has been assessed and it has been agreed that there are to be no changes for Compstall Conservation Area.

### **3. Character Appraisal**

#### **3.1 Location and Context**

Compstall is located along the boundary of the historic Werneth, Romiley and Ludworth townships, at the confluence of the River Etherow and the Gigg Brook. The historic importance of the settlement relates to its development as a mill village from around 1820 by the Andrew family, proprietors of Compstall Mill and Printworks. Compstall was an early rural industrial site, one of several significant in the history of cotton production in the Stockport area. The conservation area is particularly important for its industrial archaeology and features buildings, artefacts and sites relating to the development of the 19th Century cotton manufacturing and finishing works with their associated machinery and hydraulic engineering features.

The survival of most of the workers' housing and contemporary buildings erected for social and spiritual welfare purposes means that Compstall is an important and remarkably uncompromised example of a complete rural industrial settlement developed by a single paternalistic employer during the early period of the Industrial Revolution.

Limited modern residential development has occurred to the east of the 19<sup>th</sup> century workers' housing, but the historic and architectural identity of the early settlement remains distinct and the village retains a compact form. The attractive landscape setting is an important element of the character of the conservation area, and the dramatic contrast in topography between the steep scarp to the north of the Etherow and the flat plain to the south opens up extensive views as well as creating possibilities for interesting townscape.

#### **3.2 Origins and Development**

The Andrew family of Compstall and their employees created a cloth manufacturing and finishing establishment which was one of the first examples in the Industrial Revolution of vertical integration in the textile industry. Raw cotton was spun into thread, which was woven into cloth and then bleached and transformed into printed fabric. All these processes were carried out in a single group of buildings. Along with this development was the evolution of technology from water power to steam power and finally to electricity for the mill complex.

The building of the village and the creation of the local community accompanied these changes in industrial activity and power generation. Compstall is not a model industrial village in the sense that it compares as a planned settlement to Saltaire, New Lanark or Port Sunlight. At this early stage of industrial development, philanthropic ideas were not well developed and the gradual development of Compstall was a pragmatic response to a recurring need to house workers, rather than a formal decision to build a planned 'model' settlement. The Andrew family never needed to house their entire workforce on site, there being other housing available to rent in the wider local area. Welfare provision came later with the gradual provision of religious and community buildings as the settlement became more established and specific needs were identified. It is interesting to compare this process with the slightly earlier community building activities of Samuel Oldknow at his estate a scant few miles away in Marple. Here Oldknow was energetically carrying out industrial, agricultural, transport and social improvements in a settlement already well-established through the early domestic system of textile production.



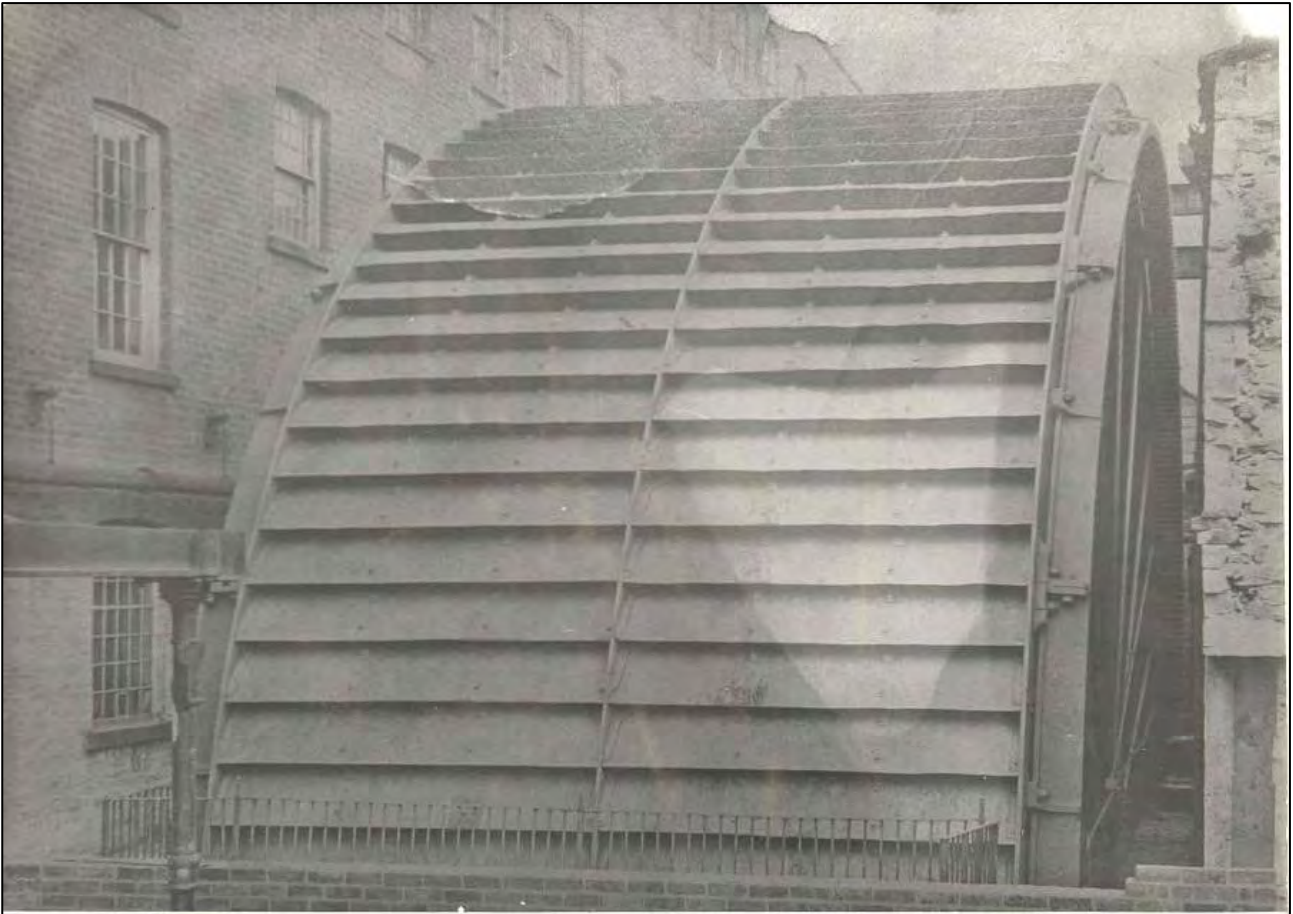
In 1815 the first George Andrew purchased Werneth Hall and began printing cloth in the outbuildings. Realising the possibilities for using the abundant supply of water available from the River Etherow and the Gigg Brook to provide water for manufacturing processes, he began building the mill at Compstall by 1820. Between 1824 and 1830 cloth was woven on hand looms from yarn which had been spun in the mill. To provide for powered looms and other industrial processes, engineering works were undertaken to store, supply and carry away water from the water wheels that powered the mill. A separate water supply was provided to the printworks by diverting the Gigg Brook through a tunnel under Andrew Street.



**Culverted course of the Gigg Brook near Compstall Church.** The brook disappears down a sink hole to left of picture, descending in a tunnel down the hillside to a small reservoir above the printworks. This was one of many interventions in the natural landscape carried out by George Andrew I to supply water for washing the finished cloth and providing power for the mills. Compare this view with that of the brooks natural course a few hundred yards upstream in Para. 3.8

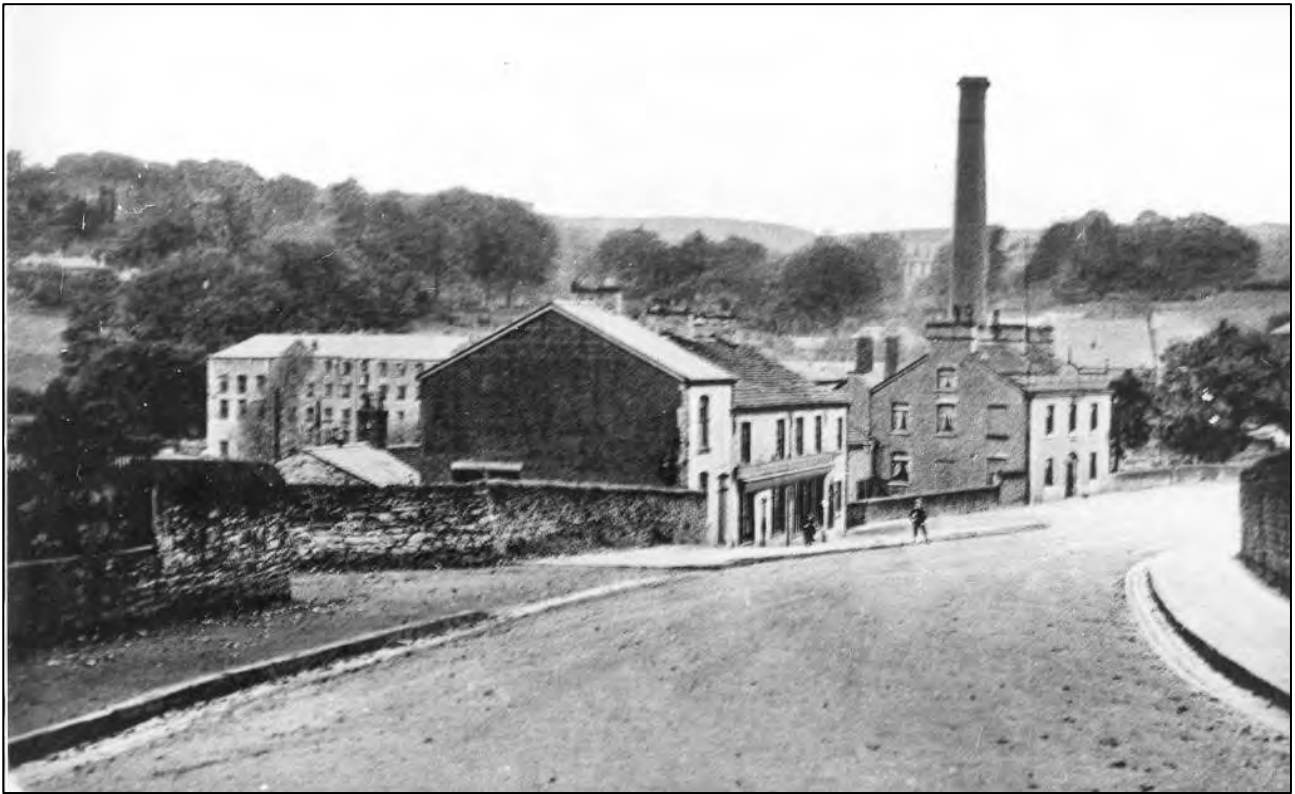
Both the manufacturing and finishing parts of the mill complex were progressively enlarged in the mid 19<sup>th</sup> century. Following on from the construction of the Old Josh and North Wheels, water power was developed to its maximum potential with the installation of the giant Lily Wheel between 1838 and 1839. Supplied with water from the main reservoir, this wheel was the largest one of its kind at the time, measuring 17 feet wide and 50 feet in diameter. After it and the other water wheels had ceased to operate in the early 1880s, steam boilers (which had already been in operation in the printworks) were generally introduced. Gas lighting to the industrial buildings and houses in the village and across the river in Ludworth was provided from the gas works in the mill complex. Subsequently in 1915 steam power and gas lighting were replaced with electricity.





**Lily Wheel at Compstall Mills.** Said to be the largest waterwheel in the country at the time of its installation in 1838-9, this giant structure was built by the Manchester engineering firm of Fairbairn and Lillie. Source: Arrowsmith, 1997

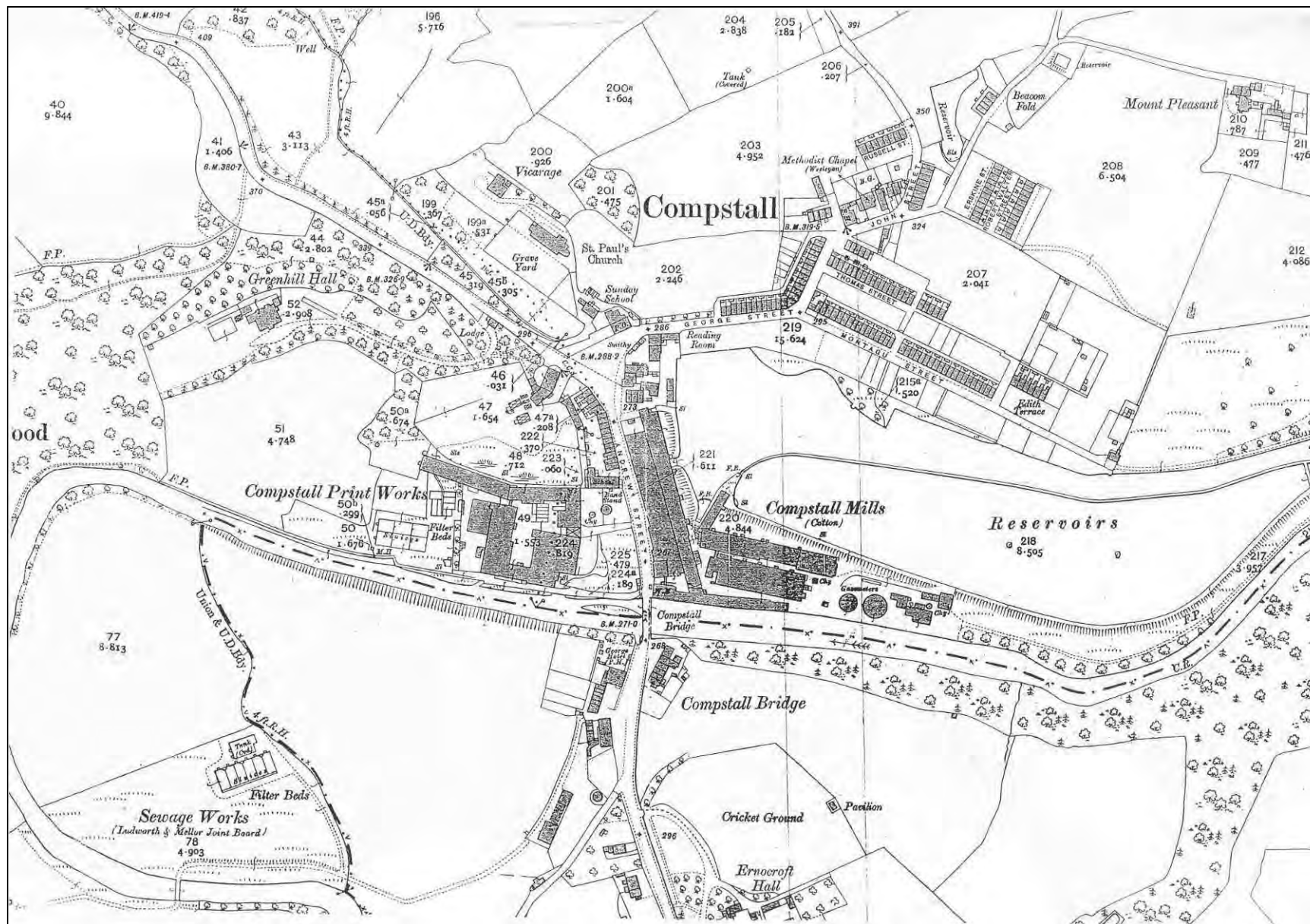
The creation and growth of Compstall village started in the period 1820 to 1824 with the building of houses for the first employees in the mill, and for some of the labour force involved in the engineering works necessary to construct substantial storage reservoirs and leats to bring water to the mill. During the 1850s a large amount of further house building took place on the Ludworth side of the Etherow. As the village continued to grow, the provision of shops became essential. Following the example of the setting up of the first "Co-op" in Rochdale, The Compstall Joint Stock Provision Company was formed in 1851. Its first retail establishment in the Compstall area was established in premises that became known as "The Tea Pot" because of the sign over the door. This was on the Ludworth side of the river. The village prospered to include grocer's, draper's and clogger's shops, followed by public houses, the Wesleyan Chapel and later the Church of England and Methodist Churches and their schools. There was also a reading room in George Street and the multi-purpose Athenaeum. Each in their own way contributed to the social, religious, educational or cultural aspects of life in the village community.



**View into Compstall from Rose Brow, date unknown.** In the foreground is Compstall Road, sweeping down to the bridge across the Etherow. The multi-storey printworks is visible behind the Co-operative store (centre) and the George Hotel. Source: Marple Website

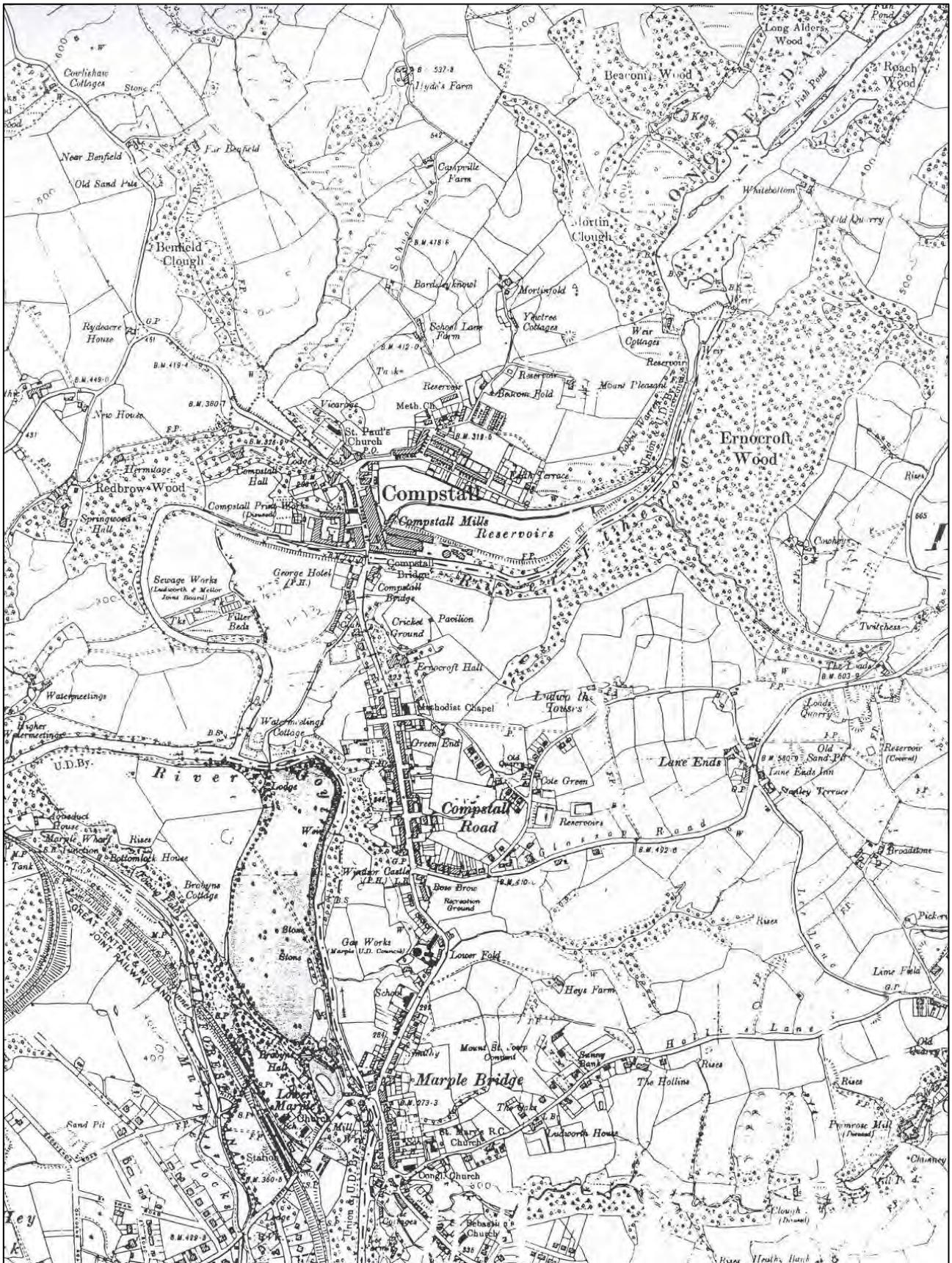
### 3.3 Archaeology

The Greater Manchester Archaeological Unit has undertaken an enhancement survey to improve the quality of information within the Stockport Historic Environment Record (HER). This document utilises results from this survey to identify sites and features of historic interest. Sites, monuments and extant buildings identified on the HER are described at Appendix 4 of this document, and located on the plan at Appendix 5.



**Ordnance Survey Map 1910, Surveyed 1907**, showing the relationship between Compstall Mills and the mill village. Greenhill Hall, set in wooded grounds to the north west was built as George Andrew I's home, later known as Compstall Hall. Mount Pleasant, to the north east, was owned and possibly built by the Andrew family, but appears to have been tenanted rather than used as a family home. It is a considerably more modest property than Greenhill Hall, and was considerably altered in the late 20<sup>th</sup> Century.





**Ordnance Survey Map 1924, showing the wider industrial landscape.**



### 3.4 Character and Appearance

The analysis developed in this appraisal should be read in conjunction with the Townscape Appraisal Map (Appendix 2).

Compstall Conservation Area comprises of a historic integrated industrial landscape including the original mills, hydraulic engineering features, mining and industrial sites, workers' housing and community buildings, as well as the higher status houses built for members of the Andrew family. This formerly industrial landscape is now a thriving residential community and popular place of recreation, featuring locally important wildlife habitats.

Four separate character areas can be identified:

- Terraced houses (together with associated boundary walls, greens and gardens) and community buildings of the mill village, including places of worship and associated school buildings, the Athenaeum, the Andrew Arms and The George Public Houses, shops (with traditional timber shopfronts) and former shops – set along the main Compstall Road and on streets climbing and cut into the hillside to the north of the River Etherow and the mill reservoirs



**Edith Terrace**, with generous front gardens.



**Montagu Street**, with two phases of building overlooking a communal green.



**The Green at Compstall**, a small open space contributing to the setting of the listed church and Church Houses.



**Changes of level between Montagu Street and Thomas Street**, with glimpses of small private gardens.





**Compstall Post Office**, an attractive combination of traditional timber shopfront, painted fascia board and two different types of historic letter box.



**An Andrew Street Shopfront**, one of a group of well-detailed timber fronts surviving in various states of repair on this street.

- Mill group in the valley bottom



**Compstall Mills from Compstall Road**. Industrial buildings of dramatic scale contrast with the domestic character of residential streets of two storey terraces. There is a hard edge to both street and river contrasting with the small green spaces of gardens and communal greens within the mill village.



- River Etherow and the associated canal/mill leat and reservoirs originally designed to supply water for power and cloth finishing at Compstall Mills, plus sites of mining and manufacture associated with the mills – all now part of the Etherow Country Park and Local Nature Reserve.



**Weir Cottages.** Originally a pair of cottages at the head of the canal for the men who operated the weir sluices.



**Sluice house adjacent to the weir,** housing machinery for controlling the water flow from river to leat.



**Canal Head** with remains of horse drawn iron barge used to transport coal mined in Ernecroft Wood to the mills.



**Mill leat,** designed as a canal with masonry retaining walls and a quayside for loading coal from the tramway to barges.



**Remains of the trestle bridge abutment** that carried the tramway from Ernecroft Wood drift mine to the canal quayside. Evidence remains of both coal workings and the tramway embankment.



**Weir.** An impressive curved and stepped structure with a dramatic fall of water, designed to generate power for the mills. Nearby sluices allowed control of the water levels.



- Area of open wooded countryside (including Compstall Hall) to the west of Andrew Street and the surviving structures of the Compstall Printworks

### 3.5 Landscape Setting, Views and Vistas



**View from the Country Park Centre and car park, looking over the former mill reservoir and Ernocroft Wood. This lake, now the centrepiece of Etherow Country Park, represents a huge intervention in the natural valley of the River Etherow and provides a spectacular open setting of wood and water for the mills and mill village.**



Compstall is set in the wider landscape of the Pennine fringe, with the mill village occupying the steep slope of the valley side to the north of the River Etherow. Panoramic views towards the hills to the south can be obtained from the open hillside above the

village, while views within the settlement are limited by the narrow curving streets and close urban texture. Views are obtained across the lakes in both directions: out of the village towards Ernocroft Wood to the south and east, and northwards into the village, featuring the terraces of Montagu and Thomas Streets set on rising ground.

A distant view to the south east opens up on a clear axis from Compstall Hall. This appears to have been subtly contrived through tree planting or selective felling in Redbrow Wood as part of the original layout of the landscaped grounds. Massed trees between the Hall and the village screen both houses and mills from view whilst permitting a vista over the dramatic Pennine landscape.

An important view into the village is that along Compstall Road from the south. The mills and river occupy the foreground with the village streets rising behind to a clear view of St. Paul's Church sited among trees on Compstall Brow.



***View into Compstall from the south:*** the tree-covered slopes of Compstall Brow rising behind the village are apparent as a fine landscape setting for the former Co-op store, George Hotel and St. Paul's Church.



***As the bend in Compstall Road is left behind,*** the buildings of Compstall Mills and the mill village come into view. The village's dramatic Pennine setting can be fully appreciated from this viewpoint.



### 3.6 Key Historic Buildings

#### 3.6.1 Listed Buildings

Listed buildings are shown on a map of Compstall Conservation Area at Appendix 3.

- *St. Paul's Church (listed grade II)*

Group Value with the War Memorial.

Built 1839-40 for the Andrew family in Early English style, in plan and appearance very like contemporary galleried Commissioners Churches. Tooled ashlar with slate roof, each of the seven nave bays with a simple lancet window, divided by narrow buttresses. Slender three-stage central west tower with lancets to belfry and coped parapet (original large corner pinnacles now missing). Polygonal chancel by James Hunt, added 1866; of rock-faced snecked stone. Vestry 1905.



**St. Paul's Church**



- *230 and 231 Compstall Brow (listed grade II)*

Group Value. House built 1835-6, originally the home of Charles Andrew and occupied by the Andrew family for most of the 19<sup>th</sup> century. Now divided into two houses known as 'Church Houses' with Post Office occupying lower ground floor. Dressed stone with graduated stone slates and ashlar dressings; stone plinth; doorways with chamfered surround, hoodmould and overlight. Windows all two-lights with double-chamfered stone mullion, hoodmould and glazing bars; sash windows to rear. Four chimney stacks. Front façade designed in a 'polite' version of the local hall house vernacular; 17<sup>th</sup> century features scaled, re-arranged and detailed for the new early 19<sup>th</sup> century squirearchy.



***230 and 231 Compstall Brow***



- *Compstall Bridge (listed grade II)*

Early 19<sup>th</sup> century road bridge over the River Etherow. Ashlar stone. Two wide segmental arched spans, the central cutwater with rounded profile and a projecting springing band. Rusticated voussoirs to arches. Coped parapet, terminating in square piers.



**Compstall Bridge**

### **3.6.2 Locally Listed Buildings**

There are no locally listed buildings in the Compstall Conservation Area. A review of locally listed buildings is currently being undertaken for the committee area of Marple. Buildings defined as key unlisted buildings have been recommended for consideration for inclusion on the Local List.

### **3.6.3 Key Unlisted Buildings**

Key unlisted buildings have been identified on the basis of their historic, architectural and townscape importance and are marked on the Townscape Appraisal Map (Appendix 2).

There are no unlisted high status buildings in Compstall and the character and architectural significance of the area depends on the continued integrity of the entire assemblage of buildings of industrial, domestic and welfare function. In this context, each element of the historic mill village makes an important contribution to the appearance and character of the area. Potential additions to the local list of buildings of historic, architectural or other special interest include:

- *Compstall Mills*

The mill buildings have a complex history of building phases, not all of which remain extant. Surviving buildings have been altered in the modern period, notably by reductions in height which have reduced their architectural impact and compromised their value in the townscape. Nonetheless, extensive industrial archaeological evidence remains for the development of the mills, the use of power technology, engineering works related to water supply, and the use of machinery. The mills were the engine of growth for the industrial village and the reason that Compstall developed to the settlement that it is today. They are at the heart of Compstall village, both physically and historically, and their protection and enhancement through the regeneration of the mill complex is crucial to the character and appearance of the conservation area.



***Compstall Mills***



- *Former Methodist Church and Sunday School, George Street*

Original Wesleyan Chapel built 1826. Sunday School added to the east at some point between the late 1830s and 1872. Chapel rebuilt in a Gothic style in 1887. An unusual feature is the ornamented terracotta frieze above the originally paired doorways. This is strongly modelled with riotous trails of foliage around a central sheaf of corn.

Both buildings are now private houses.



***Former Methodist Church and Sunday School***

- *The Athenaeum*

Built in mid 1860s by George Andrew II, originally providing for both intellectual and recreational needs in having a Library / Reading Room and a gymnasium, together with a stage and hall for social events. Single storey with tall gable to Andrew Street, built of local stone with Welsh slate roof.



***Compstall Athenaeum***



- *Compstall Hall*

Formerly 'Greenhill Hall', begun before 1819 as residence for George Andrew I and occupied by him until his death in 1854. Subsequently home of the Woodmass family (Montague Woodmass was George Andrew II's son-in-law and took over the business in 1873). Substantial remodelling and extensions to the original house were carried out later in the Victorian period.

The house enjoys an elevated situation above the mill village, whilst remaining very close to the mills at the heart of the Andrew's industrial empire. Set in landscaped and wooded grounds, the villa is built in a classical style of good quality ashlar stonework with well-proportioned sash and casement windows, an unusual balustraded glazed porch and a delicate cast iron balcony decorated with honeysuckle motifs.



*Compstall Hall from a photograph taken in the 1960s. Source: SLHLHPA*

### *'Andrew Arms' Public House*

Early 19<sup>th</sup> Century, shown on the 1839 Werneth Tithe Map and named as public house, outbuilding and yard, owned by George Andrew. Formerly the Commercial Inn.



***Andrew Arms Public House***

- ***Parish Hall***

Built 1909-10 adjacent to St. Paul's Church, following the 1908 demolition of the earlier Sunday School. This had been built before 1839 on land owned by George Andrew. Present building is two storey with single storey projections, stone-built with multiple hipped, half-hipped and gabled slate roofs.





***Parish Hall***

- ***War Memorial***

Memorial cross erected after World War I, contributing to the church and parish hall group.



***Compstall War Memorial***



- *George Public House*

Symmetrical double-fronted public house, stone built with gables and well-detailed stone doorcase. Shown on 1839-42 OS map; architectural style suggests a slightly earlier date. Prominent stone stacks and timber sash windows in stone surrounds



***The George Public House, Compstall Road***

- *Warren Lodge*

Warren Lodge is a single storey house, square in plan with a hipped roof and two tall segmental headed windows to the front elevation. It appears to be of late 19<sup>th</sup> century date. An interesting feature is the pair of cheery animal forms on the door lintel, with sinuous forms and fishy tails.

The lodge is situated at the edge of the village, beside the trackway running alongside the former mill reservoir up to Keg Pool and the nearby hunting and fishing lodge ('The Keg', built c. 1865 by George Andrew II). The various bodies of water in and around Compstall were very much part of an extensive working and recreational landscape and it is likely that the lodge was built by Montagu Woodmass, who came into control of the Compstall Mills business via his wife in 1873, and lived the life of a country gentlemen.



**Warren Lodge**, named for the Rabbit Warren that ran north eastwards between the village and Weir Cottages.



**Warren Lodge (detail)**. Sinuous beasts and a fleur-de-lys adorn the door lintel.



- *Sluice House*

A Sluice house with a mechanism inside. Building is present on George Andrew's late 1830s plans of Compstall Mills. Rectangular plan form of brick construction with slate roof. Two multi paned windows on each of the north and south elevations - north elevation with a central timber door. Single multi paned casement window flanking each gable end. Historic industrial building associated with the water powering mechanism of Compstall mills.



*Sluice House*

### **3.7 Architecture and Building Materials**

Compstall is predominantly a stone-built village. Early workers' housing and high status buildings were erected in stone with ashlar facades (Compstall Hall, Compstall Mill Lodge, St. Paul's Church or ashlar dressings and local masonry details. The terraced houses have been extensively rendered at a later date. Imported Welsh blue slates are common within the village. There is some limited later use of red brick amongst the former workers' terraces eg. Pleasant View. Compstall Mill complex is predominantly constructed in brick, with the notable exception of the Lodge and office building, which present a high quality ashlar façade to the river, Compstall Bridge and Andrew Street. This was probably designed to perform the role of a screen in obscuring views from these important routes and spaces of the more architecturally utilitarian mill blocks within the site.



**Stone detailing to Andrew Street terraced houses.** Upper windows have Tudor-style hood moulds, while ground storey lights have shaped lintels with incised decoration. Door lintels are wedge-shaped and rusticated with incised keystones. These small houses are unusual within the village in being so elaborately decorated.

Stone boundary treatments contribute positively to the historic delineation of spaces and building plots. Examples include the stone boundary between Etherow County Park and Montagu Street and the tall stone boundary that runs along Market Place to Compstall Brow and encloses St Pauls Church and associated buildings, as well as 229 – 231 The Market Place.



**Stone boundary walls** define the edge of Etherow Country Park along Montagu Street.



### 3.8 Contribution of Trees, Hedges and Green Spaces

Trees and green spaces play a crucial role in the character and appearance of the conservation area. Compstall village has an extensive woodland setting made up of woodland to the west around Compstall Hall and to the east comprising Ernocroft Wood, Beacom Wood and Keg Wood. Within the village, trees on the steep banks between streets and the generous green areas and garden plots associated with the terraced houses integrate the built area with the surrounding natural landscape.

There is also an extensive water and wetlands landscape derived from the now disused mill reservoirs and watercourses. The relationship between these, the woodland setting and the built form of the village defines the overall character of the conservation area.



**Gigg Brook** on Compstall Brow, flowing through young woodland carpeted with wild garlic.



**Communal green**, set between the terraces of Montagu Street and the reservoir.



**Landscape of wood and water.** The lake and canal, busy with wildfowl.



**Private gardens** to the rear of Montagu Street form small but significant green spaces.



### 3.9 Floorscape and Street Furniture

There is some historic interest in the floorscape and street furniture. Key features include an EIRR pillar box that is located outside Compstall Village post office and a commemorative stone of the Old School House, John Street that is located against the front boundary wall of the building. Carriageways are generally of tarmac and concrete construction. An area of sandstone flags front the stone built cottage 80-84 Thomas Street. Sandstone steps and flagged pathway link Montagu Street and Thomas Street. Flags and tumbled setts in the footways and street trees add texture and interest to the streetscene in Montagu Street. Stone built boundary walls are important features in the conservation area and make a valuable contribution to the appearance and character of the streetscene.



**Wall mounted EIRR post box,**  
Compstall Village Post Office,  
Market Place



**Commemorative stone of The**  
Old School House, John Street

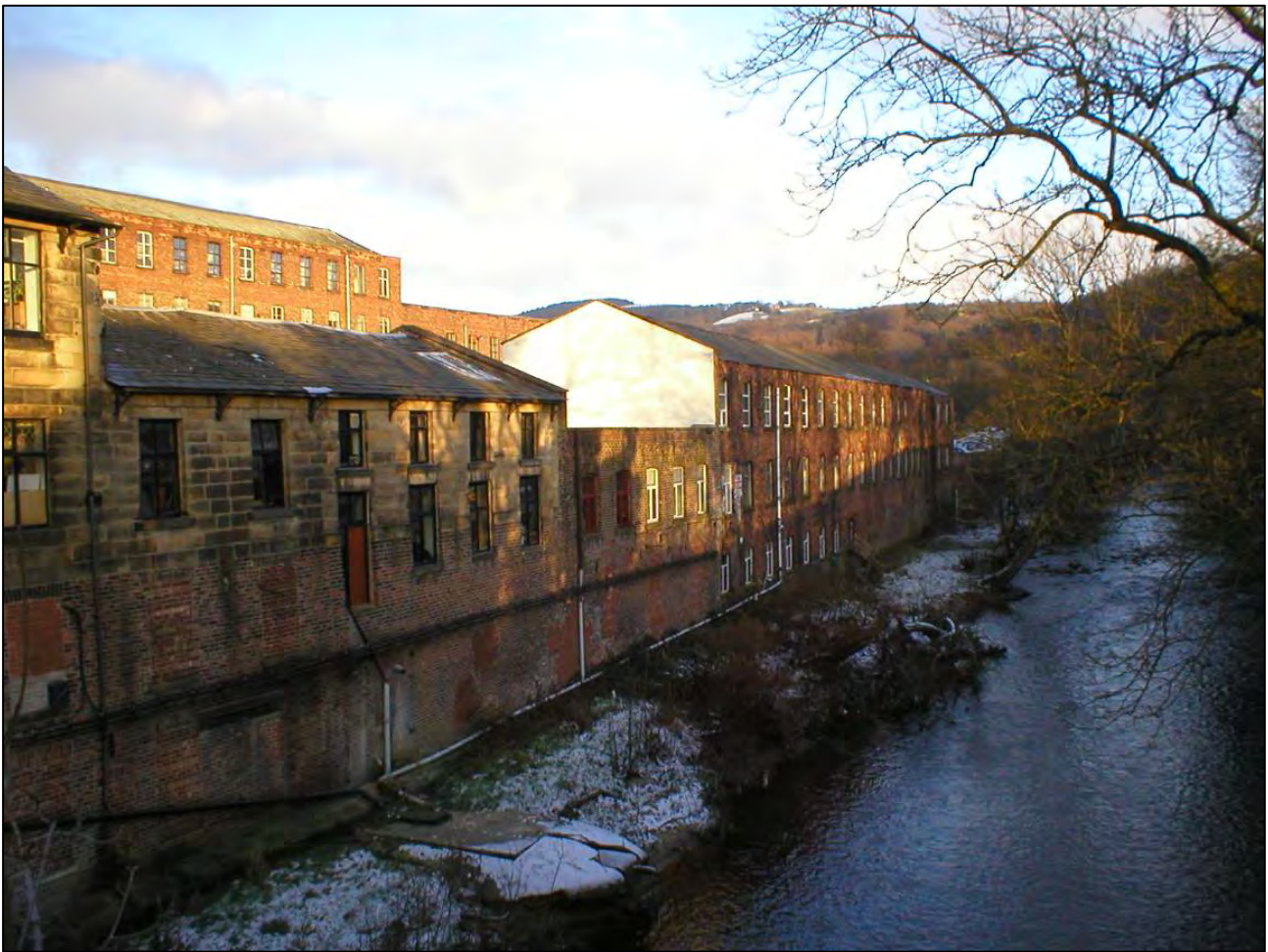


**Stone flagged and setted right of**  
way separate the terraced houses  
from their gardens on Erskine  
Street

### 3.10 Definition of the Special Interest of the Conservation Area

The special character of Compstall Conservation Area derives from the relationship between the River Etherow, the topography of its valley and the buildings of the mill village; the contrast between the close urban grain of the mill village and its open wooded and lakeside setting; and the way in which the mill group, terraces of former workers' housing, hydraulic engineering features and evidence of mining and transport systems illustrate the development of this locally important early industrial site. Panoramic views over the surrounding Pennine landscape contrast with restricted progressive views along the streets of the village. Stone is the prevailing building material within the village, in association with Welsh slate roofs, while brick is the predominant material in the Compstall Mills complex. Compstall is a popular village, with an active community, which attracts large numbers of visitors to the Country Park and local nature reserve based on the former mill reservoirs, mill leat and Ernocroft Wood.

A detailed analysis of the special character of the conservation area is set out as an introduction to this document.



**Compstall Mills.** *The relationship between the built form of the mills and mill village, the waterscape of river and artificial waterways, and the natural hilly and wooded landscape defines the special character of the conservation area.*

## 4. Preservation and Enhancement Issues

### 4.1 Condition of the Building Fabric

The buildings of the conservation area are generally in good condition, although Etherow Community Council have expressed concern over lack of maintenance to historic buildings and shop fronts, as well as boundary walls and railings in the conservation area.

The cottages of 243-256 Andrew Street, some of which have good survival of historic shop fronts show signs of lack of maintenance. This has a negative impact on the conservation area, in a highly visible location on the main route in and out of the conservation area.

A detailed survey carried out by Structural Perspectives of Halifax has established that the buildings of Compstall Mills suffer from varying degrees of damage, disrepair and structural defects.

Issues of disrepair have been investigated and addressed as part of the Conservation Area Management Plan.



## **4.2 Extent of Loss and Intrusion**

Major losses in the conservation area involve the demolition and partial demolition of mill buildings in the mid – late 20<sup>th</sup> century, resulting from a decline in the use of the buildings and the rationalisation of the complex.

The widespread rendering of the terraced houses has impaired the stone-built uniformity of the townscape and disrupted the original relationship between the surrounding natural landscape and local natural building materials. Replacement of original architectural features, such as timber sash windows and panelled doors, with modern materials and designs is widespread, resulting in a loss of character and visual fragmentation of previously harmonious facades. Nonetheless, the scale and massing of the terraces and their relationship with the overall built form and wider landscape has been maintained and very little of the original mill housing stock has been demolished. Small cleared sites now used for car parking indicate where short terraces have been lost.

A small number of buildings are intrusive in the conservation area by virtue of siting, design, scale, massing and materials that are inappropriate to their townscape setting. In particular, Bernard Walker Court occupies a focal site at the junction of Andrew Street and George Street, but is visually weak and fails to articulate the corner in a way that reflects the continuous building line set closely to the back of pavement that characterises the streetscape in this part of the conservation area. The Country Park Visitor Centre is another intrusive building, which is prominent in views from the mill complex and the car park. Its adjacent car park is poorly landscaped and does not provide visual links between the mill complex, lakeside and historic village.

The installation of solar panels on roof slopes which are visible in the street scene and in wider views of the conservation area, particularly across and through the Country Park, intrudes on the appearance and character of the area. This is evident on properties on Montagu Street.

## **4.3 Development Issues**

Development issues in Compstall focus around the potential for the conservation-led regeneration of Compstall Mills. A planning brief has been prepared by the Council for Compstall Mills which considers the complex land use, conservation and environmental issues relating to the site.

A significant threat to the appearance and character of the Compstall conservation area lies in the exercise of permitted development rights for the installation of solar panels on roof slopes which are visible in the conservation area.

## **4.4 Preservation and Enhancement**

Detailed proposals for the preservation and enhancement of the conservation area are set out in the Compstall Conservation Area Management Plan.

Initial suggestions of management measures that came out of the 2006 public consultation included:

- A4 Directions should be considered, for the retention of original materials, architectural forms and features
- Preparation of a Planning Brief to guide development at Compstall Mills
- Preparation of design guidance to protect the character and appearance of the conservation area
- Review of protection afforded to trees through Tree Preservation Orders.
- Preparation of management guidelines to protect the important contribution made by trees to the conservation area
- Addition of the key unlisted buildings set out above to the Local List
- A management plan should include guidance on future development within the conservation area

#### Compstall Article 4 Direction (2010)

The retention of original materials and architectural details is crucial to the character and appearance of the conservation area. At the same time, such features are vulnerable to loss through permitted development rights. As such an Article 4(2) Direction has been made in 2010 to extend control over householder alterations in the conservation area.

## **5. Community Involvement**

### **5.1 Public Consultation**

Public consultation has been an integral part of the conservation area extension and appraisal process. Proposals were posted on the Council's web site together with an electronic questionnaire. A Press Release was issued. Letters were sent out to all residents of the conservation area informing them of the proposal for designation and inviting them to an afternoon and evening drop-in session held at Etherow Country Park Visitor Centre on 25<sup>th</sup> January 2006. Each letter contained a questionnaire canvassing residents' views and information on the link to the draft conservation area appraisal on the Council's web site. Fliers and posters were also distributed in the wider Compstall area and local history and amenity groups were contacted directly. The drop-in session was well attended and gave residents the chance to ask questions of Council Officers related to designation and possible Article 4 Directions. Copies of the draft conservation area appraisal were made available to read and take away. An exhibition was mounted on the history and special interest of the conservation area, and this was continued for a week following the close of the drop-in session.

A summary of responses to the public consultation exercise is included in Appendix 1.

### **5.2 Response to Stakeholder Comments**

*"In the final analysis, heritage is what people value"*  
(English Heritage, 2006)

The consultation exercise generated a significant level of response from stakeholders. Letters and completed questionnaires were analysed to assess the level of support for both the designation of the proposed new extended conservation area and for the imposition of extra controls to protect the area's special character. Comments were also evaluated to determine those aspects of the area which stakeholders consider to be



important to its appearance and character. English Heritage's *Guidance on Conservation Area Appraisals*, published in August 2005, highlights the importance for local authorities of recognising the values which are ascribed by stakeholders to historic environments when preparing appraisals of the special character of conservation areas.

Strong support for the proposed new conservation area was indicated, with 92% of respondents considering that the area is of special architectural or historic interest which should be protected by designation. Residents of Compstall considered that the following aspects of the conservation area are important to its character: historic buildings, open space, water features in the form of the river, lakes and weir, trees, boundary walls, street furniture (including street name signs) and street surfaces. Of these characteristics, historic buildings, open space, the water landscape, trees and boundary walls were seen to be the most significant in defining the special character of the area. The weight accorded these elements is reflected in the character analysis and the definition of the area's special character set out in this appraisal.

Stakeholders were also asked whether they considered that certain types of work were harmful to the special character of the conservation area. Responses indicated that, amongst other issues, a range of householder alterations are seen as inappropriate in Compstall. Specifically, these included the replacement of original roofs, windows, and doors with modern materials; the loss of original architectural features from buildings; the demolition of boundary walls; the removal of historic features from the street scene and the painting of exterior walls of buildings. Despite extensive existing alterations, particularly to windows and doors, this concern is reflected in a 87% level of support for special controls over permitted development.

Preliminary suggestions for conservation area management measures have been made in this appraisal document, addressing concerns raised by stakeholders. These include the making of an Article 4(2) Direction, covering identified properties and categories of work as appropriate. This proposal was authorised in principle by SMBC Executive on 13<sup>th</sup> March 2006. Public concern over inappropriate alterations to buildings can also be addressed in ways that complement the extra planning controls put in place by an Article 4 Direction, including the preparation of local generic guidance to facilitate a sympathetic approach to design and choice of materials. Identification of further locally listed buildings can also help promote interest in, and respect for, the architectural qualities of buildings.

Concern was expressed more generally over inappropriate development which does not reflect the character of the conservation area, particularly that of the existing cottages. Improvements to the appearance of the Country Park Visitor Centre were requested. The need to preserve the historic features of the Compstall Mills complex was highlighted, and a desire expressed that large scale development of the mills and surrounding areas be prevented. ASK Developments Ltd, who own Compstall Mills, made detailed submissions regarding the regeneration potential of development at the Mills site, the importance of economic viability in promoting a regeneration scheme and the detailed provisions of the Council's Unitary Development Plan as they relate to the site. A future management plan should include guidance on these aspects of development within the conservation area. Special provisions within the Council's Unitary Development Plan apply to the Compstall Mills site and a Planning Brief will be prepared by the Council to guide development at Compstall Mills in ways that respect the historic and architectural character, archaeological features and townscape significance of the mill complex, as well as exploring the ecological, recreational, and community potential of development.

Another issue is the importance of trees in the area and the need to protect them. This is reflected in the suggestion of a review of protection afforded to trees through Tree Preservation Orders and the preparation of management guidelines to protect the important contribution made by trees to the conservation area. The loss of trees on Montagu Street was specifically mentioned, as was a desire to see more tree planting generally.

The quality of the public realm also emerged as an area of concern, with comments from Etherow Community Council criticising the spread of bitumen pavements (notably on the main street) and the introduction of modern street furniture, particularly inappropriately designed lamp standards. Resolution of these issues requires a corporate approach, and could be addressed as part of a future Conservation Area Management Plan.

## **6. References and Further Reading**

### ***Primary Sources:***

Stockport Local History Library Historic Photograph Archive:

### ***Published Maps and Plans:***

Burdett's Map of Cheshire 1777

Greenwood's Map of Cheshire 1819

Swire and Hutchings' Map of Cheshire 1830

Bryant's Map of Cheshire 1831

OS 1 inch to 1 mile Sheet 81 1842 Surveyed 1839-42 (reprinted by David and Charles as Sheet 27 Buxton)

OS 1:2500 Cheshire Sheet XI.14 1872

OS 1:2500 Derbyshire Sheet V.1 1880 Surveyed 1879

OS 6" to 1 mile Derbyshire Sheet V; Cheshire Parts of Sheets XI and XX  
Derbyshire Surveyed 1879, Cheshire 1872

OS 1:2500 Cheshire Sheet XI.14 Second Edition 1898 Surveyed 1896-7

OS 1:2500 Cheshire Sheet XI.14 Edition of 1910 Surveyed 1907

OS 6 inches to 1 mile Derbyshire Sheet V; Cheshire Parts of Sheets XI and XX Edition of 1924

Derbyshire Revised 1917-19; Cheshire revised 1907 and partly in 1916-17

OS 1:2500 Lancashire Sheets CXII.11 and 12 Revision of 1934



### **Secondary Sources:**

**Arrowsmith, Peter** Stockport: A History

Stockport MBC Community Services Division and Stockport Libraries in association with the University of Manchester Archaeological Unit, 1997

ISBN: 0905164997

**Brumhead, Derek the** Geology and Industrial Archaeology of Compstall:

A Guided Walk Commencing at Etherow Country Park 1989

English Heritage (2006) Guidance on Conservation Area Appraisals

English Heritage (2006) Guidance on the Management of Conservation Areas

**Etherow Country Park, Compstall** The Coal Trail: A Brief History of Coal Mining in Ernocroft Wood

GMAU

**Greater Manchester Archaeological Unit** Sites and Monuments Record

**Thelwall, R. E.** The Andrews and Compstall their Village Cheshire County Council Libraries and Museums / Marple Antiquarian Society 1972

**[www.marple-uk](http://www.marple-uk)**

## **7. Contacts**

General Inquiries concerning the Compstall Conservation Area should be referred to the Council's Conservation Officer.

Telephone: 0161 474 2620/4561

Enquiries relating to development proposals and planning applications should be addressed to the Council's Planning Services department

Telephone: 0161 474 3896

Enquiries relating to trees within the conservation area should be addressed to the Council's Arboricultural Officer

Telephone: 0161 217 6111

Enquiries relating to the Historic Environment Record should be addressed to Greater Manchester Archaeological Advisory Service

Joule House,  
School of the Built Environment  
1 Acton Square,  
University of Salford,  
Salford,  
M5 4NW

Tel: 0161 295 5522

Email: [gmaas@salford.ac.uk](mailto:gmaas@salford.ac.uk)

## **National Organisations**

### **English Heritage**

North West Office

Canada House

Chepstow Street

Manchester

M1 5FW

Tel: 0161 242 1400

[www.english-heritage.org.uk](http://www.english-heritage.org.uk)

Email: [northwest@english-heritage.org.uk](mailto:northwest@english-heritage.org.uk)

### **Victorian Society**

The Victorian Society

1 Priory Gardens

Bedford Park

London W4 1TT

Tel: 020 8994 1019

[www.victorian-society.org.uk](http://www.victorian-society.org.uk)

Email: [admin@victorian-society.org.uk](mailto:admin@victorian-society.org.uk)

### **Georgian Group**

6 Fitzroy Square,

London W1T 5DX

Tel: 087 1750 2936

[www.georgiangroup.org.uk](http://www.georgiangroup.org.uk)



Email: [info@georgiangroup.org.uk](mailto:info@georgiangroup.org.uk)

**Twentieth Century Society**

70 Cowcross Street

London EC1M 6EJ

Tel: 020 7250 3857

[www.c20society.org.uk](http://www.c20society.org.uk)

Email: [coordinator@c20society.org.uk](mailto:coordinator@c20society.org.uk)

## **Appendix 1**

### **Summary of Compstall Public Consultation Questionnaire Responses**

Total response = 24

#### **Conservation Area Status**

Agree = 22 = 91.7%  
Disagree = 2 = 8.3%  
Don't know = 0 = 0%

#### **Article 4 Directions**

Agree = 21 = 87.5%  
Disagree = 3 = 12.5%  
Don't know = 0 = 0%  
Agree in reservation = 0 = 0%

#### **Most important features in defining the special character of the area**

- Buildings
- Trees
- Boundaries
- Open Space
- Street furniture
- Street surfaces

#### **Others specified –**

- Water features – the river, weir etc.
- Retention of employment for local people
- Cobbles on Montague Street
- Original street signs

#### **Works which could harm the special character of the area –**

- Replacement of original roofs, windows, and doors with modern materials
- Loss of original architectural features from buildings
- Demolition of boundary walls
- Removal of historic features from the street scene
- New or replacement signs and shopfronts (where applicable)
- Painting of exterior walls of buildings

#### **Others specified –**

- New building
- Replacement of Council house windows and doors with plastic replacements



### **What can the Council do to further protect or enhance the conservation area?**

- Preserve historic features of the mill
- Ensure streetscapes remain appropriate to the Conservation Area
- Improve appearance of the Country Park Visitor Centre
- Improve public transport links to encourage people to leave their cars at home.
- Prevent new building unless in character with existing cottages
- Protect hedgerows and embankments along country lanes
- Plant more trees and shrubs
- Enforce anti littering
- Prevent large scale development of Compstall Mill and surrounding areas
- New street lighting
- Replacement of trees removed in Montague Street
- By providing a Compstall Conservation Officer
- Better pedestrian access
- More floral displays
- Address problems of street parking

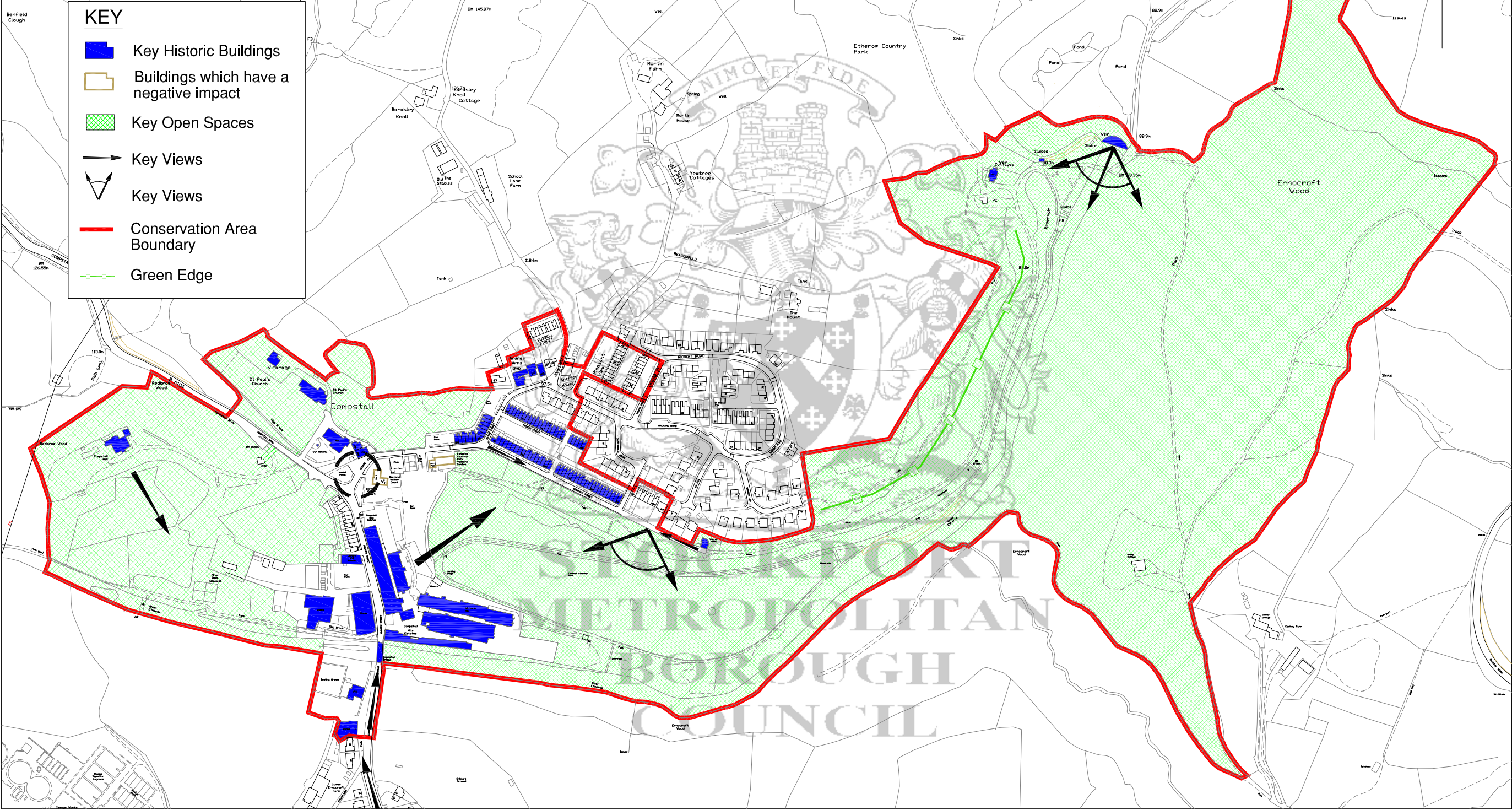
### **Other comments**

- Unlikely benefits of including the park into the Conservation Area
- Include Red Brow Wood in the Conservation Area

## **APPENDIX 2:**

# Townscape Appraisal Map

This map is reproduced from Ordnance Survey material with the permission of Ordnance Survey on behalf of the Controller of Her Majesty's Stationery Office © Crown copyright. Unauthorised reproduction infringes Crown copyright and may lead to prosecution or civil proceedings. Stockport Metropolitan Borough Council 100019571 2006



Produced by Survey, Cartography and Ground Modelling Section SCGJOBNO  
Environment and Economic Development Services



**STOCKPORT**  
METROPOLITAN BOROUGH COUNCIL

Ged Lucas  
CORPORATE DIRECTOR  
PLACE DIRECTORATE

PLANNING SERVICES  
STOPFORD HOUSE  
PICCADILLY  
STOCKPORT  
SK1 3XE

AMENDMENTS

DRAWN	CHECKED	DATE	No	AMENDMENT

JOB TITLE

COMPSTALL CONSERVATION AREA

DRAWING TITLE

APPRAISAL MAP

Filename Z:\SCG\ARCHIVE\JOBS\D\_JOBS\D721\SCG\DATA\D721\_14.DWG

Drawn	Cad	Amended	Approved
PM	DP	DH	.
Date	Date	Date	Date
22/03/06	22/03/06	31/03/12	.
Scale			
NTS			
Drawing No.			Revision
D721_14\CONSERVATION			.

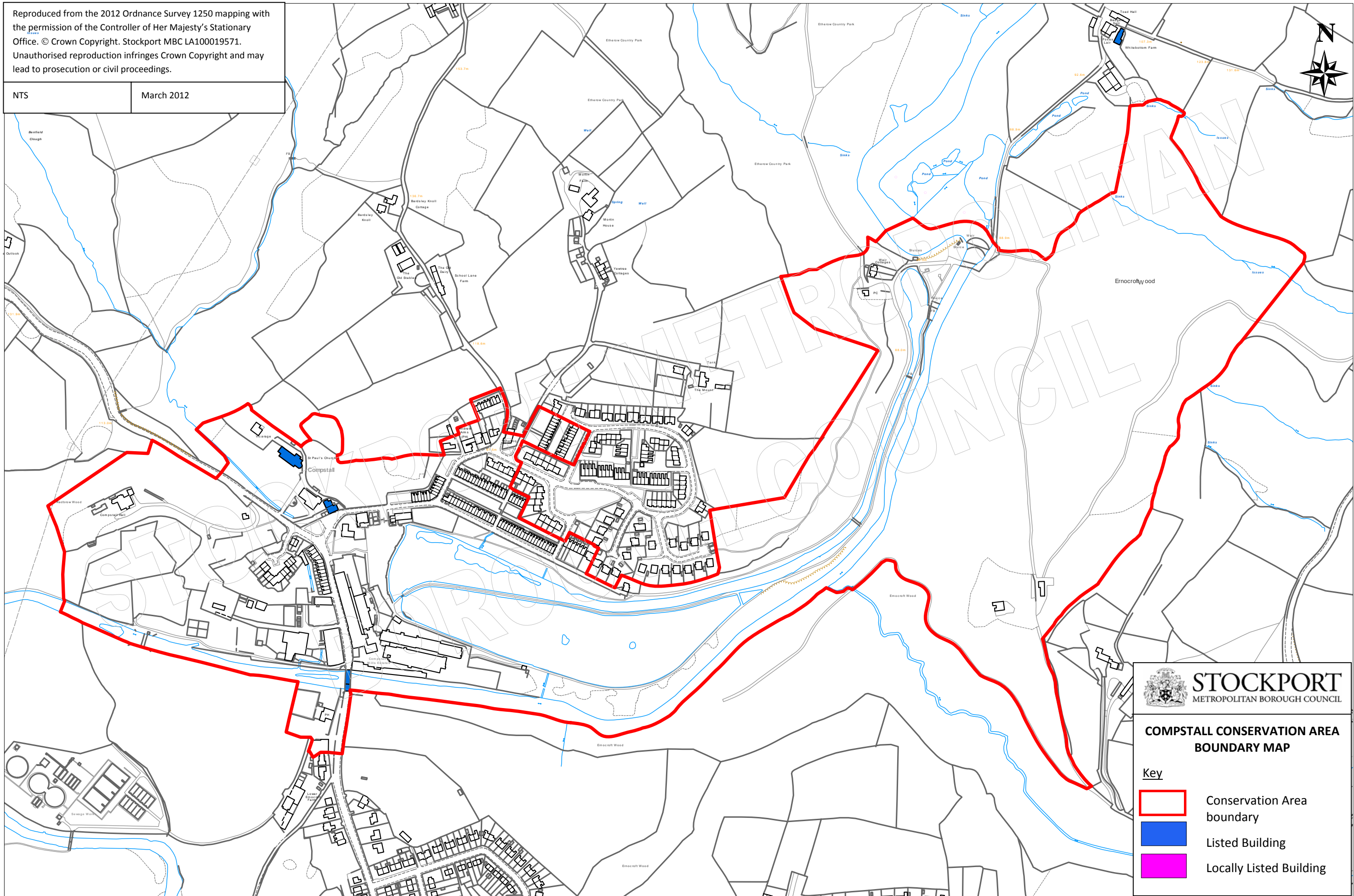


## **APPENDIX 3:**

# **Conservation Area Boundary Map – Listed & Locally Listed Buildings**

Reproduced from the 2012 Ordnance Survey 1250 mapping with the permission of the Controller of Her Majesty's Stationary Office. © Crown Copyright. Stockport MBC LA100019571. Unauthorised reproduction infringes Crown Copyright and may lead to prosecution or civil proceedings.

NTS March 2012



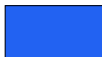
**STOCKPORT**  
METROPOLITAN BOROUGH COUNCIL

**COMPSTALL CONSERVATION AREA  
BOUNDARY MAP**

Key



Conservation Area  
boundary



Listed Building



Locally Listed Building

## Appendix 4

### Compstall Conservation Area Historic Environment Record (HER) Entries

This appendix includes sites and monuments recorded in the conservation area and its immediate vicinity.

#### 1. MonUID: MGM13757

**Name:** Outlet of Tailrace of Compstall Mill

**Record Type:** Monument

**Description:** Stone-built arched opening set at angle to river bank marks the outlet of the tailrace from Compstall Mill. Indicated on the 1839 and 1850 Romiley tithe maps, with the line of tailrace tunnel itself being shown on the George Andrew estate plan.

#### 2. MonUID: MGM3532

**Name:** Greenhill Hall - Compstall Hall

**Record Type:** Building

**Description:** Greenhill is shown on Greenwoods map of 1819. Named in the 1850 Romiley tithe award as mansion and grounds owned and occupied by George Andrew.

#### 3. MonUID: MGM13763

**Name:** Greenhill Hall, Lodge (site of)

**Record Type:** Monument

**Summary:** Porters Lodge shown on 1839 Romiley tithe map. Demolished by 1972.

**Description:** Shown on the 1839 Romiley tithe map and named in 1849 Romiley tithe award as porters lodge for Greenhill estate, owned by George Andrew. Still shown on 1934 map but demolished by 1972 by which date a new lodge had been built to the west.

#### 4. MonUID: MGM13765

**Name:** Compstall Rd, Reservoirs (site of)

**Record Type:** Monument

**Summary:** Reservoirs formed across course of Gigg Brook. No longer extant by 1896-7.

**Description:** Upper and lower reservoir formed across course of Gigg Brook. Shown on the 1839 tithe map(a) for Werneth & 1850 tithe map for Romiley, and named as owned



and occupied by George Andrew. Only the eastern half of lower reservoir remained by 1872 when the OS map shows a sluice at its eastern end. Reservoir no longer extant by 1896-7.

**5. MonUID:** MGM13764

**Name:** Vicarage, Compstall Road

**Record Type:** Building

**Summary:** Built in 1852.

**Description:** Built in 1852. shown on the George Andrew estate plan.

**6. MonUID:** MGM4504

**Name:** Horse Brass (possible)

**Record Type:** Find Spot

**Description:** Found on 31.10.93 whilst metal detecting on private farmland. The object is a conical disc 7cm diameter and 20cm. There are concentric rings on the upper face with a small knob in the centre. One side has fractured. Underneath are 2 locating pins which exhibit iron rust. The disc itself appears to be copper or bronze. Interpretations include: Anglo-Saxon shield boss, Romano- British disc brooch, or Victorian (or more recent) horse brass (most likely). Brought in to Manchester Museum for identification, retained by finder.

**7. MonUID:** MGM13776

**Name:** Prospect Place, Houses (site of)

**Record Type:** Monument

**Summary:** Four cottages shown on 1839 Werneth tithe award. A single storey building currently stands on the same site.

**Description:** Named on 1839 Werneth tithe award as four cottages and gardens owned by Joseph Harrison and occupied by Henry Fitzsimmons and others. Named on the George Andrew estate plan as Harrison St and on the 1872 OS map as Prospect Place. Four houses still shown on 1934 map. Since demolished and a house erected over western end of site. A structure is shown to the rear of the cottages on the 1872 and later maps; a single storey building stands on the same site.

**8. MonUID:** MGM13777

**Name:** Andrew Arms (Commercial Inn)

**Record Type:** Building

**Summary:** Public House shown on the 1839 Werneth tithe award. On Stockport Local List.

**Description:** Shown on the 1839 Werneth tithe award (a) and named as public house, outbuilding and yard, owned by George Andrew and occupied by John Saxon. Its former name, the Commercial Inn is given on the George Andrew estate plan.

**9. MonUID:** MGM3853

**Name:** Compstall Wesleyan Chapel

**Record Type:** Building

**Summary:** Original chapel built 1829. rebuilt in 1887 in a gothic style.

**Description:** Stone-built in Gothic style. Paired pinnacles on frontage. Adjoining Sunday School. Forms part of the mill village of Compstall. Chapel and Sunday School built 1826. In 1886 the chapel was demolished and replaced by the present building, dated 1887. Now Compstall Methodist Church.

**10. MonUID:** MGM13778

**Name:** John Street, Workers Housing

**Record Type:** Building

**Summary:** Two houses shown on Werneth tithe award. Still extant.

**Description:** Shown on the 1839 Werneth tithe award and named as two houses owned by Eli Moores and occupied by F J Bryan and another.

**11. MonUID:** MGM13779

**Name:** Russell Street, Workers Housing

**Record Type:** Building

**Summary:** Four cottages on 1839 Werneth tithe award, additional four cottages added by 1872. Still standing.

**Description:** Named on the 1839 Werneth tithe award as four cottages owned by William Greaves and occupied by Benjamin Hoyles and others. By 1872 the row had been extended to the west with addition of four other cottages, this extension is also shown on the George Andrew estate plan.

**12. MonUID:** MGM13780

**Name:** John Street, Workers Housing (Site of)

**Record Type:** Monument

**Summary:** Row of back-to back houses shown on the 1839 Werneth tithe award. Part demolished

**Description:** Row of back-to-back houses shown on the 1839 Werneth tithe award(a) and named as fifteen cottages owned by William Bolden Esq and occupied by William Saxon and others. Shown as though-houses on the 1872 OS map, which names the street to the west (now John St) as Stanley St, with Back Stanley St to the rear. Still indicated on the map of 1934. The northern part of this row has been demolished. It is uncertain whether the rendered building which stands on the south incorporates the houses here.

**13. MonUID:** MGM13784

**Name:** Pleasant View, Workers Housing

**Record Type:** Building

**Summary:** Row of workers housing built by 1897. Still extant.

**Description:** Site vacant on 1872 map. Row of workers housing built by 1896-7. named Erskine Street on 1907 map and Pleasant View by 1934.

**14. MonUID:** MGM13785

**Name:** Erskine Street, Workers Housing

**Record Type:** Building

**Summary:** Row of workers housing built by 1897. Still standing.

**Description:** Site vacant on 1872 map. Row of workers housing built by 1896-7. named Robert Walker Street on 1907 map and Erskine Street by 1934.

**15. MonUID:** MGM13775

**Name:** James Street, Workers Houses

**Record Type:** Monument

**Summary:** Workers housing shown on Swire & Hutchings county map of 1830. Still shown on 1934 map but demolished by 1972.

**Description:** Row of housing shown on Swire & Hutchings county map of 1830. Shown on 1839 Werneth tithe award as five houses and listed as part of a group of 82 cottages owned by George Andrew and occupied by John Wooley and others. Still shown on 1934 map but demolished by 1972.

**16. MonUID:** MGM13772



**Name:** Thomas St, Workers Housing

**Record Type:** Building

**Summary:** Row of housing shown on Swire & Hutchings county map of 1830. Still extant.

**Description:** Row of housing shown on Swire & Hutchings county map of 1830. Listed in 1839 Werneth tithe award as part of a group of 82 cottages owned by George Andrew and occupied by John Woolley and others.

**17. MonUID:** MGM13771

**Name:** Thomas St, Workers Housing (Site of)

**Record Type:** Monument

**Summary:** Row of workers cottages shown on 1830 Swire & Hutchings county map. Demolished by 1897.

**Description:** Row of housing shown on Swire & Hutchings county map of 1830. Listed in 1839 Werneth tithe award as part of a group of 82 cottages owned by George Andrew and occupied by John Wooley and others. Still shown on 1872 map but demolished by 1896-7.

**18. MonUID:** MGM13769

**Name:** Montague St, Workers Houses

**Record Type:** Building

**Summary:** Part of a group of 82 cottages in the 1839 Werneth tithe award. Still standing.

**Description:** Row of housing shown on Swire & Hutchings county map of 1830. Western end named in 1839 Werneth tithe award as a house owned and occupied by John Wooley. The remainder is listed as part of a group of 82 cottages owned by George Andrew and occupied by John Wooley and others.

**19. MonUID:** MGM13773

**Name:** Thomas St, Workers Housing

**Record Type:** Building

**Summary:** Workers Housing shown on 1839 Werneth tithe award. Still standing.

**Description:** Site vacant on Swire & Hutchings county map of 1830 and Bryants map of 1831. Shown on 1839 Werneth tithe award as five houses and listed as part of a group of 82 cottages owned by George Andrew and occupied by John Wooley and others.

**20. MonUID:** MGM13770

**Name:** Montague St, Workers Housing

**Record Type:** Building

**Summary:** Workers cottages shown on 1839 Werneth tithe award. Still extant.

**Description:** Site vacant on Swire & Hutchings county map of 1830 and Bryant's map of 1831. Row of housing shown on 1839 Werneth tithe award and listed as part of a group of 82 cottages owned by George Andrew and occupied by John Wooley and others.

**21. MonUID:** MGM13751

**Name:** Culvert & Sluice

**Record Type:** Monument

**Summary:** The sluice still survives at SJ9663 9076. The exit of the culvert is also visible at the foot of the riverside wall.

**Description:** North-South culvert shown on the George Andrew estate plan leading from the south bank of the reservoir to discharge in the river. Its purpose must have been to regulate the level of water in the southern part of the dividing causeway. At its south, riverside, end at the period the culvert became an open channel; this arrangement is most clearly indicated in the late 1830s volume of plans which shows gear in leading from the mill to this channel, where it presumably operated a sluice. On the 1872 map the open channel is no longer shown. Instead the map shows a sluice at the site of the inlet into the culvert in the reservoir bank.

**22. MonUID:** MGM13812

**Name:** Albert Shed, Compstall Mills

**Record Type:** Building

**Summary:** Albert Shed is still standing.

**Description:** At the east end of Albert Mill (SMR 2583.1.9) a new weaving shed was added between 1872 - 97. in the 1904 inventory this is described as brick-built and of a single storey.

**23. MonUID:** MGM13751

**Name:** Culvert & Sluice

**Record Type:** Monument

**Summary:** The sluice still survives at SJ9663 9076. The exit of the culvert is also visible at the foot of the riverside wall.

**Description:** North-South culvert shown on the George Andrew estate plan leading from the south bank of the reservoir to discharge in the river. Its purpose must have been to regulate the level of water in the southern part of the dividing causeway. At its south, riverside, end at the period the culvert became an open channel; this arrangement is most clearly indicated in the late 1830s volume of plans which shows gear in leading from the mill to this channel, where it presumably operated a sluice. On the 1872 map the open channel is no longer shown. Instead the map shows a sluice at the site of the inlet into the culvert in the reservoir bank.

**24. MonUID:** MGM13798

**Name:** Bridge St, Workers Housing (site of)

**Record Type:** Monument

**Summary:** Workers housing shown on 1839 OS map. Demolished some time after 1935.

**Description:** Shown on 1839-42 OS map. Still standing in 1934. The 1904 inventory refers to a lease of nine cottages known as Bridge Street in 1806.

**25. MonUID:** MGM13800

**Name:** Compstall Rd, Cottages

**Record Type:** Building

**Summary:** Cottages shown on the 1839 OS map. Now converted into offices.

**Description:** Cottages, now converted to offices. Shown on the 1839-42 OS map. This and later mapping also shows a building to the rear. These cottages may have been the 'Old Tea Pot', the first premises of the Compstall co-operative society founded in 1851.

**26. MonUID:** MGM13799

**Name:** George Hotel

**Record Type:** Building

**Summary:** George Hotel shown on the 1839 OS map. Still extant.

**Description:** Shown on 1839-42 OS map. The earliest known detailed map to show the site is the 1870-8 map(b) which indicates a range extending from the inns south-west corner; this is still shown in 1934 but had been removed by 1972.

**27. MonUID:** MGM13804



**Name:** Office, Compstall Mills

**Record Type:** Building

**Summary:** The office building, as extended in around the 1840s, still stands intact.

**Description:** The mill office shows two phases of construction. The earliest of these phases is shown on the 1839 Werneth tithe map and the late 1830s volume of plans as comprising a single depth building immediately adjacent to Andrew St and Compstall Bridge. On the exterior of the present building this phase of construction is distinguishable by the use of fine ashlar, in contrast to the more roughly finished stonework of the later eastern extension. That extension is indicated on the George Andrew estate plan, and is therefore no later than 1852, and probably no later than 1847.

## **28. MonUID:** MGM13803

**Name:** Old Mill, Compstall Mills (site of)

**Record Type:** Monument

**Summary:** Old Mill was demolished in the mid- late 20th century but remains of its south elevation are preserved in the riverside wall, of its east elevation in the gable of the mechanics shed, and of its west elevation in a later boiler house building. There are also above ground remains on the site of the east wall of its wheelpit.

**Description:** The original mill of 1823 included Old Mill, comprising two adjoining north-south non fireproof factories, powered by water wheel and steam engine in an annex to the north. Named in the late 1830s volume of mill plans as Old Mill, and is shown in the 1904 inventory as comprising two adjacent brick-built factories, each of five stories with an attic, the more southern factory also being partly cellared. Both were of non fireproof construction ie constructed with wooden floors, these floors being carried on a central row of columns in each factory. The ground floor of the southern factory was broken by a through passage running at an angle which mirrored the factory's end wall by the river. In the 1830s the Old Mill contained both powerlooms and mules, the looms occupying the ground floor, with a few also on the first floor. At the northern end of Old mill was a structure named in the 1904 inventory as brick and stone built, again of non fireproof construction. Although described in the inventory as of four stories, it was of a similar height to Old Mill in that the lower storey was nearly 30ft high. In 1904 this lower storey contained a turbine house, but a drawing in the late 1830s volume of plans shows it divided into a waterwheel house on the east and steam- engine house on the west. It seems likely that these two factories, together with the northern annex containing the power supply system, represent the main mill buildings as constructed in 1823-4.

## **29. MonUID:** MGM13813

**Name:** Engine House, Compstall Mills

**Record Type:** Building

**Summary:** This engine house is still standing and is now used as an electricity substation.

**Description:** The 1904 inventory shows a new engine house at the west end of the large weaving shed which from the date of its engine was built in 1903. This engine house is still standing and is now used as an electricity substation.

**30. MonUID:** MGM13806

**Name:** Weaving Rooms & Mechanics Shop, Compstall Mills

**Record Type:** Building

**Summary:** The two storey weaving block was replaced by the present single storey weaving shed between 1872 and 1897, while at an earlier date the mechanics shop was rebuilt as the present larger building.

**Description:** Swire & Hutchings map shows an arm of the mill complex extending eastwards from Old Mill, which on Bryants map is depicted as comprising two separate parallel ranges. The more northerly of these is probably to be identified with a building named on the George Andrew estate plan as 'weaving rooms'. In the late 1830s volume of plans this is shown as having two storeys, with powerlooms on the ground floor which is named as 'Deansgate'. The eastern end of the structure was somewhat wider than the rest, with its southern wall slightly inset, suggesting it was an addition to the original build. On the west at ground floor level a narrow passage separated the building from Old mill from which it received power via horizontal shafting. Between 1872 and 1897 this weaving shed was replaced by a larger block, listed in the 1904 inventory as 'Large Weaving Shed' and described as brick built and of a single storey.

The more southerly of the two ranges is indicated on the 1830 map as running immediately alongside the river. It is presumably the narrow riverside building which is shown on the later more detailed mapping as extending roughly the same distance eastwards as the weaving rooms. In the 1830s volume of plans and on the George Andrew estate plan it is named as a mechanics shop.

**31. MonUID:** MGM13811

**Name:** Albert Mill, Compstall Mills

**Record Type:** Building

**Summary:** Albert Mill still stands but has lost its upper (fourth) floor and attic.

**Description:** Albert Mill was erected between 1847 and 1872. The 1904 inventory identifies it as brick-built, of four storeys and an attic, of which the lower three storeys were of fireproof construction.

**32. MonUID:** MGM13808

**Name:** Victoria Mill, Compstall Mills

**Record Type:** Building

**Summary:** Victoria Mill survives to its full height, including the western build containing the stairs and engine house.

**Description:** Victoria Mill was a brick built factory of five storeys and an attic, the lower four storeys being of fireproof construction, with two rows of fifteen columns. The late 1830s volume of plans names the building as Blow Mill, the 1904 inventory as Victoria Mill. The late 1830s plans show a full-height build at its west end, containing an engine house and stairs. At the east end of the mill was a single storey annexe, above which a privy tower rose against the mills north east corner. Again the late 1830s plans show powerlooms on the ground floor of the mill with mules above.

**33. MonUID:** MGM3300

**Name:** Compstall Mills

**Record Type:** Building

**Description:** Marked on both maps as a cotton mill. There are 2 spinning mills on the site. No.1 is originally early C19 and water-powered. Phase 1 is of 5 storeys and 17x5 bays. Brick built. Brick arch windows and stone sills. Gable slate roof. Phase 2 (late C19) is of 3 storeys and 10x3 bays. Brick built. Flat arch windows with stone sills. Flat roof. Possible engine house to gable end. No.2 is opposite No.1. Brick built. Originally mid C19. 2 storeys with many bays. Similar windows to No.1 mill. Weaving shed No.1 is mid to late C19. Brick built. 4 roof ridges. Att. To phase 1 of mill No.1. No.2 is late C19 with 24 roof ridges. No.3 is next to mill No.1. Offices situated at the entrance. Early/late C19. Large reservoir nearby. Village community (3)(5). Slides. Built as combined mill (i.e for spinning and weaving) by Andrew Bruckshaw & Co in 1823-4. Taken over by the Calico Printers Association in 1899. Spinning ceased at the mill in 1926 but weaving continued until 1966. The original mill of 1823-4 included Old Mill, comprising two adjoining north-south non fireproof factories, powered by water wheel and steam engine in an annexe on the north; this mill was demolished in the mid- late 20th century but remains of its south elevation are preseved in the riverside wall, of its east elevation in the gable of the mechanics shed, and of its west elevation in a later boiler house building. There are also above ground remains on the site of the east wall of its wheelpit.

**34. MonUID:** MGM13754

**Name:** Weaving Shed, Andrew St

**Record Type:** Building

**Summary:** Weaving Shed erected in 1916. This building is still standing.

**Description:** Erected in 1916 to house warp-sizing department of Compstall Mill; powerlooms installed in 1936.



**35. MonUID:** MGM13755

**Name:** Reservoir, east of Compstall Printworks (site of)

**Record Type:** Monument

**Summary:** Reservoir, east of Compstall Printworks (site of)

**Description:** Shown on Greenwoods county map of 1819. Named on 1839 Werneth tithe award as owned and occupied by George Andrew. The 1872 OS map shows the reservoir having a more regular plan. Reservoir is still shown on the 1896-7 map but in 1907, following the closure of printworks, is indicated as silted and overgrown. In 1916 the site was built over by the new weaving shed (SMR 12477.1.0).

**36. MonUID:** MGM3268

**Name:** Compstall Bridge Works

**Record Type:** Building

**Description:** Marked on map as a disused print works and on map as Bridge Works. The first buildings for fabric printing were erected around 1820 and gradually expanded throughout the C19 by George Andrew of Compstall. In 1899 the site was incorporated into the Calico Printers Association which was intended to consolidate a declining industry. From its formation the CPA closed uneconomic works and this site was closed in 1901. Most of the buildings were then demolished. The remaining buildings were then sublet to smaller individual tenants. Only two early C19 buildings survive, these being a single storey stone building of 6x1 bays with very tall windows with stone lintels and sills, and a single storey brick weaving shed type building of 5 roof ridges. Large site with one building occupying each side of Compstall Road in opposition (TAS 98).

Printworks established in 1802-4 by Thomas Andrew of Harpurhey. After his death in 1821, ownership passed to his son George. He leased the works to his brothers James & Edward beofre taking over their running in 1836-7 and operating these as George Andrew & Sons. In 1899 the firm became part of the CPA which closed the printworks in 1901. mapping from 1830 onwards shows that the printworks developed around a central yard. Only remaining building is the former bleach croft, stone built with an arched entrance. On the south of the site, a stone arch is probably associated with a leat for a waterwheel.

**37. MonUID:** MGM13805

**Name:** Andrew St Range, Compstall Mills (site of)

**Record Type:** Monument

**Summary:** The extended Andrew St range was taken down and new buildings erected on the site in about the early 1880s.

**Description:** The early range along Andrew St on the opposite side of the site entrance to the office is shown on the maps of 1830-5 as extending northwards for roughly the same

distance as Old Mill. Its function is unclear. The late 1830s volume of plan and the George Andrew estate plan both show the building having an external stairs and therefore to have been of at least two storeys. Given its positions close to the site entrance as ancillary use as stabling or warehousing seems likely. This range was later extended to the north between 1835 and 1839. The result was that it now almost reached the two storey factory wing, leaving only an access point from the street into what was a narrow yard. The late 1830s volume of plans shows that set within one of the rooms in the centre of the street range was a square chimney, which presumably served two sets of boilers positioned against the west wall of Scotland Mill.

**38. MonUID:** MGM13809

**Name:** Noahs Ark, Compstall Mills (site of)

**Record Type:** Monument

**Summary:** Noahs Ark was demolished in the mid-to late 20th century; some footings are visible and the ghost of its gable is evident on the wall of Victoria Mill.

**Description:** Noahs Ark was a brick built weaving shed of a single storey with a king post roof. It was built by 1839 along the embankment at the south-west corner of the mill reservoir. The northern end of the building sat on a small spur projecting into the reservoir. On the east was a substantial fall in height from the reservoir embankment to the ground floor level of Victoria Mill, so that Noahs Ark itself was at the level of the first floor of the mill. The late 1830s volume of plans shows that the northern end of the building was slightly elevated above the rest, with walls of thicker construction.

**39. MonUID:** MGM13752

**Name:** Sluice, Compstall Mill

**Record Type:** Monument

**Summary:** Sluice shown on the 1872 OS 1st Edition map. No longer shown on the 1972 OS mapping.

**Description:** Sluice shown on the 1872 map against the south bank of the reservoir. Still indicated on the 1934 map(b) but not shown in 1972. Like the sluice to its east (SMR12474) its purpose must have been to regulate the level of water in the southern part of the reservoir.

**40. MonUID:** MGM13797

**Name:** Sluice (site of)

**Record Type:** Monument

**Summary:** Sluice shown on George Andrew estate plan. Not indicated by 1972.

**Description:** Sluice situated towards the western end of the causeway dividing the mill reservoir, shown on the George Andrew estate plan. Still shown on the 1934 map. Not indicated in 1972 by which date the causeway had been widened. Site now comprises a shallow overflow flanked by stone slabs with iron fittings for a sluice gate.

**41. MonUID:** MGM13807

**Name:** Scotland Mill, Compstall Mills

**Record Type:** Building

**Summary:** Scotland Mill is still standing but has lost its upper (fourth) storey and attic. The adjoining Provans Mill was demolished in the mid to late 20th century but remains of the east wall of its wheel pit are still visible.

**Description:** Scotland Mill was brick built of four storeys with an attic, of which the lower three storeys were fireproof, with brick arches supported by two rows of fifteen columns. The late 1830s volume of plans names it as North Mill, but by the 20th century it had become known as Scotland Mill. At its north end it continued as a stone and brick built structure, also of four storeys and an attic but of non fireproof construction, named in the 1904 inventory as Provans Mill. Its ground floor contained a wheel house, containing what was known as the North Wheel. At the north east corner of Scotland Mill was a stair tower and butting against this on the south, a smaller privy tower. The late 1830s volume of plans shows that the ground floor contained powerlooms with mules on the first and second. Scotland Mill can be reasonably identified with the water-powered factory which in December 1832 George Andrew agreed to build for C & M Provard of Glasgow to occupy as a self-contained mill for spinning and powerloom weaving, although whether that firm ever took up occupancy is uncertain. The mill appears to be shown on the 1835 plan of the proposed Compstall Bridge to Gorton turnpike, placing its construction in the period 1833-5. As such it is the earliest building of fireproof construction known to have been erected at Compstall Mill. Projecting from the west side of Provans Mill and Scotland Mill by 1839 was a two storey factory wing extending as far as Andrew St. The late 1830s volume of plans shows that like Old Mill and Scotland Mill, it contained powerlooms on the ground floor.

**42. MonUID:** MGM13758

**Name:** Athenaeum, Compstall

**Record Type:** Building

**Summary:** Public Library and museum. On Stockport local list.

**Description:** Built by George Andrew II in mid 1860s. Shown on the 1872 OS map as a 'school'. Later a public library.

**43. MonUID:** MGM13756



**Name:** Reservoir, north of Compstall Printworks (site of)

**Record Type:** Monument

**Summary:** Reservoir shown on Greenwoods county map of 1819. Currently open space.

**Description:** Shown on Greenwoods county map of 1819. named on 1839 Werneth tithe award(b) as owned and occupied by George Andrew. The 1872 OS map shows three sluice along its southern bank where it adjoined the prinworks buildings. Reservoir is still shown on the 1896-7 map but in 1907, following the closure of printworks, is indicated as silted and overgrown. On the 1934 map(f) the site is shown as wooded.

**44. MonUID:** MGM13759

**Name:** Andrew Street, Workers Houses

**Record Type:** Building

**Summary:** Workers Cottages shown on tithe award.

**Description:** Shown on 1839 Werneth tithe award and named as twelve cottages owned by George Andrew and occupied by Thomas Hawkyard and others.(1)

**45. MonUID:** MGM13810

**Name:** North Mill, Compstall Mills (site of)

**Record Type:** Monument

**Summary:** North Mill was demolished around 1970.

**Description:** North Mill was erected, between 1839 and 1847, at the north end of Scotland Mill (SMR 2583.1.5). The 1904 inventory describes it as being of four storeys and an attic, of non fireproof construction. The two storey factory wing, built aganst Scotland Mill and Provans Mill was now either enlarged or replaced by a wider structure which also partly overlapped the new North Mill.

**46. MonUID:** MGM13740

**Name:** Reservoir, Compstall Mill

**Record Type:** Monument

**Summary:** Subrectangular reservoir shown on 1835 turnpike plan. The remains of the sluice are still visible (2004) within a fenced overgrown area to the north of the mill at SJ96529086.

**Description:** Subrectangular reservoir to the north of Scotland Mill shown on the 1835 turnpike plan and the 1839 Werneth tithe map, and named on both maps as owned and

occupied by George Andrew. On the George Andrew estate plan this is no longer shown and North Mill had been constructed over its eastern half. This plan also indicates a channel running from the main mill reservoir along the north end of North Mill, and then turning south. A culvert then carried the water below Andrew St to join with the system of water channels on the north side of the printworks.

**47. MonUID:** MGM13750

**Name:** Compstall Mill, Reservoir

**Record Type:** Monument

**Summary:** Reservoir supplying water-power to Compstall Mill. Western end infilled by 1972.

**Description:** Reservoir supplying water-power to Compstall Mill and also one of several sources of supply to Compstall printworks. Shown on Swire and Hutchings county map of 1830(a) and probably contemporary with building of the mill in 1823-4. The reservoir was divided into two by an east-west causeway. The northern half was fed directly by the leat-canal and supplied water to the mill's wheels and later turbines. The southern half probably served as a reserve supply. The western end of the reservoir was infilled by 1972. This area includes the reservoir's north-west corner which ratebook evidence suggests to have been used as a wharf for coal barges on the leat-canal.

**48. MonUID:** MGM13746

**Name:** Cross St, Building (site of)

**Record Type:** Monument

**Summary:** Rectangular building shown on the 1872 OS first Edition map. Site vacant on the 1972 map.

**Description:** Site vacant on the George Andrew estate plan. Rectangular building, running along the bank of the reservoir shown on the 1872 map. Partly taken down between 1907(b) and 1934. Site vacant on the 1972 map.

**49. MonUID:** MGM13744

**Name:** Cross St, Workers Houses (site of)

**Record Type:** Monument

**Summary:** Site of six back-to-back houses shown on the 1839 Werneth tithe map and the George Andrew estate plan. The surface of Cross St is still visible (2004), paved with stone setts.

**Description:** Two rows of six back-to-back houses shown on 1839 Werneth tithe map and the George Andrew estate plan. Possibly the same buildings are shown on the 1835 turnpike plan. By 1872 the easternmost pair and the two more westerly pairs had been

removed, and the remaining pairs appear to have been at least partly converted into through-houses. The 1904 inventory includes four cottages in Cross St, part occupied by the Conservative Club. The houses were still standing in 1934.

**50. MonUID:** MGM13760

**Name:** Andrew Street, Houses/shops & Site of Workers Houses

**Record Type:** Monument

**Summary:** Workers cottages shown on 1835 turnpike map. Present houses/shop are later replacement.

**Description:** Shown on 1835 turnpike map. Named in 1849 Romiley tithe award as cottages owned by George Andrew and occupied by servants. Still shown on 1872 map. Present houses/shops on this site are a later replacement, possibly being shown on the 1896-7 map.

**51. MonUID:** MGM13761

**Name:** Andrew Street, Cottage (site of)

**Record Type:** Monument

**Summary:** Cottage shown on 1835 turnpike plan. Demolished by 1896-7

**Description:** Shown on 1835 turnpike plan and named as house owned by George Andrew and occupied by Randle Pickford. Named on 1849 Romiley tithe award as 'old cottage' owned by George Andrew and occupied by a servant. Still shown on the 1896-7 map.

**52. MonUID:** MGM13762

**Name:** Compstall Rd, Stables (site of)

**Record Type:** Monument

**Summary:** Stables shown on 1835 turnpike plan. Demolished between 1907 and 1934.

**Description:** Building shown on 1835 turnpike map and named as stables owned and occupied by George Andrew; also named as such on 1849 Romiley tithe award. The George Andrew estate plan shows that the building had been extended to the rear and names the site as a stable, coach house and yard. The original stable block was demolished between 1907 & 1934.

**53. MonUID:** MGM3328



**Name:** Compstall Settlement

**Record Type:** Place

**Description:** Burdett names the site, showing the crossing over the River Goyt and a building north east of Compstall Brow (1). 1870-8: as before, with growth along Compstall Road and much development adjacent to the River Etherow, including mill buildings . Compstall is possibly derived from the O.E. "cumb": a valley and "stall": a place, a site or a fishery since it is adjacent to the Etherow.

**54. MonUID:** MGM13745

**Name:** Farmhouse & Ancillary Industrial Complex (site of)

**Record Type:** Monument

**Summary:** Farmhouse probably dating from the 17th Century which appears to have become part of the ancillary industrial complex which was arranged around a central yard. This complex is presumably that listed in the 1904 inventory as a smithy, wheelwrights shop and open-fronted shed. All buildings had been taken down by 1972.

**Description:** Rectangular complex of buildings arranged around a central yard, with large rectangular block on the north, named in the Werneth tithe award as part of a group of properties owned by George Andrew and occupied by William Greaves and others and comprising a 'house, 14 cottages, yard and vacant land'. The George Andrew estate plan names the south-west part of the rectangular complex as a joiners shop, the south-eastern part as 'house, outbuildings and yard', while the north-western part along with the large rectangular building to the north is named as 'Farmhouse, outbuildings and yard'. The plan also shows a saw pit on the east side of the complex, while the adjoining south-eastern area towards the canal is named as 'timber yard &c'. The farmhouse and joiners shop formed a single range along Andrew St. the farmhouse is probably that which John Graham in 1846 stated to have effectively comprised Compstall when the Andrews first arrived in the 1800s. It is probably also the building shown on Burdetts map of the 1770s. Photographs show the farmhouse to have been a low building of stone, later rendered, with a double gable, and suggests a 17th Century date. On the north-east a channel is shown on the estate plan leading from the reservoir to run between the rectangular complex and the northern block. It is annotated with the word wheel implying that a water-wheel in this channel supplied power to these buildings.

**55. MonUID:** MGM13747

**Name:** George Street, Culvert

**Record Type:** Monument

**Summary:** Culvert shown on the George Andrew estate plan.

**Description:** Culvert shown on the George Andrew estate plan passing along the south side of a row of workers housing on George St; running to the north of, and then across, the ancillary industrial complex; and then running along the north side of a row of houses

on Cross St, before passing under Andrew St to emerge as an open channel forming part of the supply to the printworks. The original source of water carried by this culvert was possibly a reservoir on the north-eastern edge of the village.

**56. MonUID:** MGM13748

**Name:** George Street, Cottage/Reading Room/Club

**Record Type:** Building

**Summary:** Small rectangular range on George St with a yard on its west. Present building is a tall single-storey hall, rendered, with 3 large windows on the north, 2 on the south, with a gabled outshut at the west end.

**Description:** Small rectangular range on George St, with a yard on its west. On the George Andrew estate plan this is identified as comprising a cottage, outbuilding and yard. On the 1872 map the yard is named 'reading room'. The same is shown on the 1907 map. On the 1934 map the site is named 'club' and a new build is shown to the rear. This is presumably the site referred to by Thelwall : 'a reading room was provided in a small building in George St which is now used as County Branch Library, with a Liberal Club in the basement'. Price(1984) adds that the cellar underneath the reading room was used as a mortuary, while the upper part of the building served as the council chamber for Compstall UDC.

**57. MonUID:** MGM13749

**Name:** George Street, Workers Housing (site of)

**Record Type:** Monument

**Description:** Row of housing shown on Swire & Hutchings county map of 1830. Named in 1839 Werneth tithe award as comprising 21 cottages owned by George Andrew and occupied by Richard Thomas and others. Still shown on 1872 OS map but demolished by 1896-7.

**58. MonUID:** MGM13768

**Name:** George St, Workers Houses

**Record Type:** Building

**Summary:** Row of 26 cottages shown on 1839 Werneth tithe award. By 1972 the central 13 cottages were still standing but rest had been demolished.

**Description:** Site vacant on Swire & Hutchings county map of 1830. Row of housing shown on 1839 Werneth tithe award, and named as 26 cottages owned by George Andrew and occupied by George Bagshaw and others. Still shown on 1934 OS map but by 1972 the central 13 houses were still standing, the rest having been demolished.

**59. MonUID:** MGM13766

**Name:** Parish Hall, site of Sunday School

**Record Type:** Building

**Summary:** Parish Hall on Stockport Local List.

**Description:** School shown on 1839 Werneth tithe map(a), on land owned by George Andrew. Sunday School demolished in 1908 and Parish Hall built on the site in 1909-10.

**60. MonUID:** MGM13767

**Name:** War Memorial

**Record Type:** Monument

**Summary:** Memorial cross erected after World war I.

**Description:** Memorial cross erected after World war I.

**61. MonUID:** MGM13795

**Name:** Boat House (site of)

**Record Type:** Monument

**Summary:** Boat House shown on the 1872 OS map. Removed by 1907.

**Description:** Boat house on the south bank on the mill reservoir shown on the 1872 and 1896-7 maps. Removed by 1907.

**62. MonUID:** MGM13796

**Name:** Sluices (site of)

**Record Type:** Monument

**Summary:** Sluice shown on the George Andrew estate plan. The site is now a shallow overflow from the leat-canal into the reservoir.

**Description:** Sluice situated towards the eastern end of the causeway dividing the mill reservoir, shown on the George Andrew estate plan. The 1872 map shows a system of other sluices immediately to the south and east, regulating water in a small enclosed area in the easternmost corner of the reservoir. The sluices are also still shown on the 1934 map(b) but not in 1972. There are still remains of two sluices here, one on the bank by the leat canal, the other on the embankment separating this area from the reservoir. Both



comprise a column carrying a sluice wheel, the wheel itself surviving only at the western sluice.

**63. MonUID:** MGM13794

**Name:** Boat House (site of)

**Record Type:** Monument

**Summary:** Boat House shown on the George Andrew estate plan. Removed by 1872.

**Description:** Boat House shown on the George Andrew estate plan in the eastern corner of the southern part of the mill reservoir. Removed by 1907.

**64. MonUID:** MGM13753

**Name:** Andrew Street, Leat

**Record Type:** Monument

**Summary:** Leat shown on the 1839 Werneth tithe map. The leat is not shown on the map of 1872 or later mapping and no unequivocal evidence of this feature has been noted on the ground.

**Description:** Leat shown on the 1839 Werneth tithe map and on the George Andrew estate plan which names it as 'old goyt' (ie old leat). It runs along the south side of the reservoir, between the reservoir embankment and the river, and on the east continues as an open channel nearly as far as the leat canal, to SJ 9717 9089. It originally may have begun at a weir site shown on the estate plan. On the west the maps show the 'old goyt' ending at what seems to have been the boundary of the mill, at SJ 9666 9072. The leat is not shown on the map of 1872 or later mapping.

**65. MonUID:** MGM1854

**Name:** Priory Cottage

**Record Type:** Building

**Description:** The site includes Gothic pointed arch windows at the rear. Originally built as a winding shed for Ernocroft Drift Mine. Initially a two storey cottage, 20th century renovations converting it into a bungalow, only for recent work to reintroduce an upper floor. 'L' shaped building depicted on 1st edition OS map(1870-8).

**66. MonUID:** MGM3223

**Name:** Ernocroft Wood (Coal Mining)

**Record Type:** Monument

**Description:** Ernocroft Wood formed part of the Peak Forest which was a royal demesne at the time of the Domesday survey. Mining took place in the wood in the C19th, a tramway being built to facilitate the movement of coal. Dog Clough was mined in the 1920s at the time of the General Strike. There was probably earlier mining but the only evidence so far are C17th sledges found at the W. tail end of the wood near Compstall Bridge. There is a plan of coal workings in the Wood dated 1847, and this has a reference to "Old Workings". Apart from the tramway, there are substantial earthworks within the wood for which there is no historical evidence(1). Colliery tramway and revetment for tramway bridge.

**67. MonUID:** MGM13793

**Name:** Weir (site of)

**Record Type:** Monument

**Summary:** Weir marked on the George Andrew estate plan. No visible remains.

**Description:** Marked as 'old weir' on the George Andrew estate plan. Not shown on later mapping. Presumed to be associated with the 'old goyt' (SMR12476.1.0). No visible remains at the grid reference given, derived from the estate map, but c20m to the south of that point is a shallow natural fall within the river.

**68. MonUID:** MGM13802

**Name:** Sluice

**Record Type:** Monument

**Description:** Sluice across leat-canal, immediately upstream of a footbridge. Includes the remains of two iron gates, surviving below water. There were positioned into iron fittings set in stone slabs against the canal sides and third slab set off centre within the canal itself. A footbridge is shown on mapping of 1872 onwards.

**69. MonUID:** MGM13790

**Name:** Leat-Canal

**Record Type:** Monument

**Summary:** Leat shown on Swire & Hutchings map of 1830.

**Description:** leat c 10-12m wide running south-westwards from above the weir on the Etherow to feed the reservoir of Compstall Mill. Stone-lined and supported by revetment alongside the riverside. The width of the leat enabled it to be also used as a private canal, enabling the transport of coal mined upstream of the mill. At the north end the canal broadens out into a basin. The leat is shown on Swire & Hutchings map of 1830 and Bryants map of 1831.

**70. MonUID:** MGM13791

**Name:** Coal Barge

**Record Type:** Monument

**Summary:** Coal Barge resting by the edge of the leat-canal.

**Description:** Coal barge now resting by the edge of the leat-canal. Built of cast iron plates; 2m wide, 0.9m deep, and 6.8m long, with steeply sloping sloping ends. It retains one of originally four rowlocks, used for steering.

**71. MonUID:** MGM13787

**Name:** Weirhead Cottages

**Record Type:** Building

**Summary:** Cottages shown on 1839 Werneth tithe award. Still standing.

**Description:** Shown in the 1839 Werneth tithe award & named as houses owned by George Andrew and occupied by Samuel Cooper & others.

**72. MonUID:** MGM13789

**Name:** Sluice

**Record Type:** Monument

**Summary:** Sluice house with working mechanism. Shown on the George Andrew plan.

**Description:** Site comprises a sluice house with working mechanism and outside, a disused sluice on the river bank. A sluice is shown here on the George Andrew plan but at that date was set within an open channel.

**73. MonUID:** MGM13792

**Name:** Bridge, site of Tramway

**Record Type:** Monument

**Summary:** Bridge and tramway shown on George Andrew estate plan. Tramway removed by 1872.

**Description:** A bridge is shown on this site as early as the George Andrew estate plan, at which date it carried a tramway across the river to terminate at the basin at the head of the leat-canal. This tramway had been removed by 1872.

**74. MonUID:** MGM13788

**Name:** Weir

**Record Type:** Monument

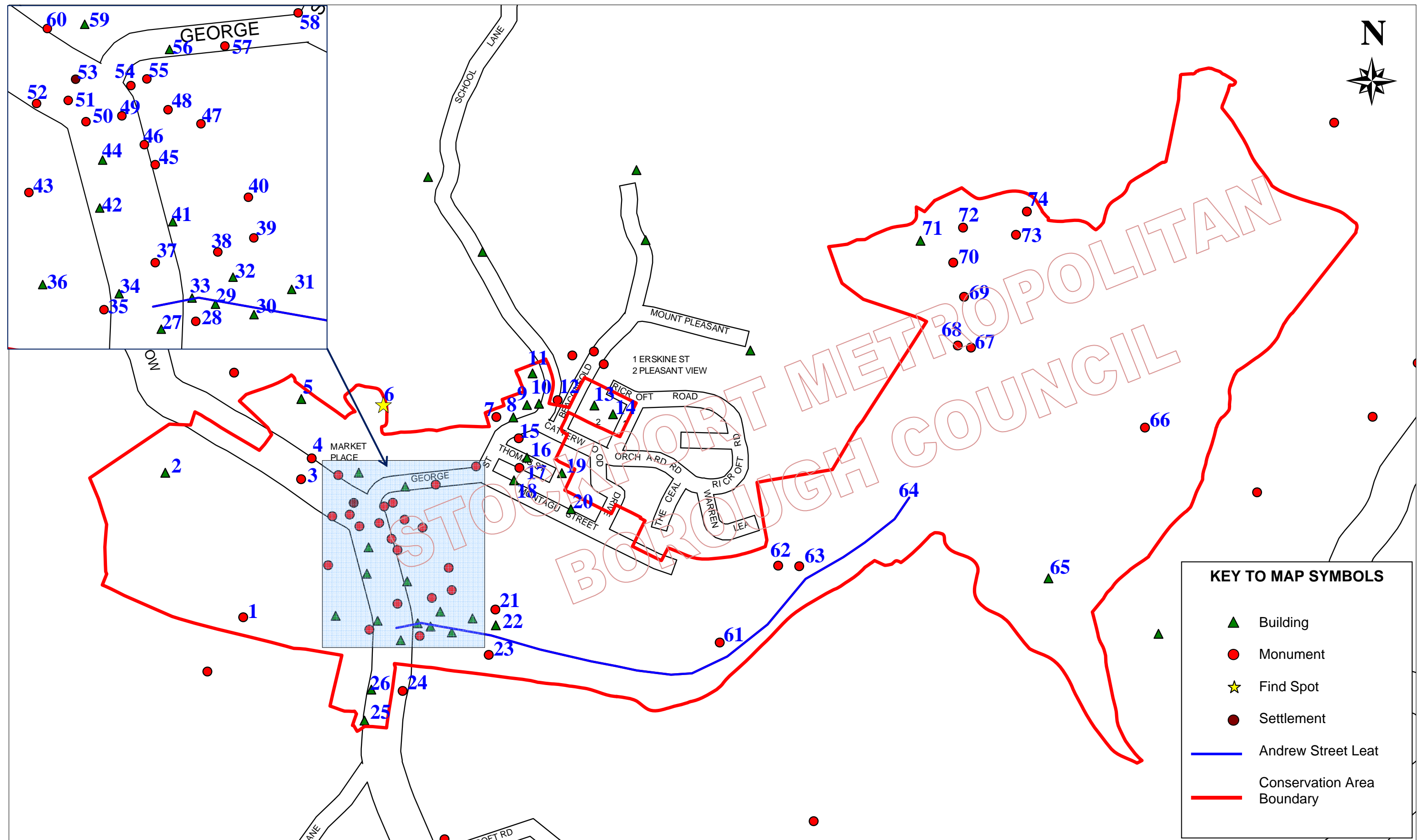
**Summary:** Weir shown on the George Andrew estate plan.

**Description:** Concave stone built weir of at least 8 steps, flanked by stone revetting to the river banks. The flow of water over the weir appears to have been controlled by a sluice on the west bank, where its mechanism is set within a stone trough. A square-headed opening in the revetment immediately below the weir is presumed to mark the outlet from this sluice. The concave form of the weir is clearly shown on the George Andrew estate plan.



## **APPENDIX 5:**

# Historic Environment Record Map



Title: **Historic Environment Records within Compstall Conservation Area**

Date: March 2012

Place Directorate

Scale : Not to scale